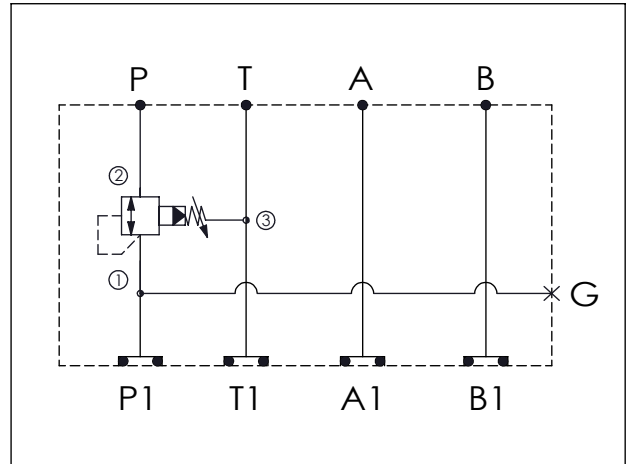


## ISO 05 SANDWICH MANIFOLD

Ordering Code: **MH05SPW-X-Y-Z03**

Stack Height : 63.0mm

UNIT:mm



### TECHNICAL DATA

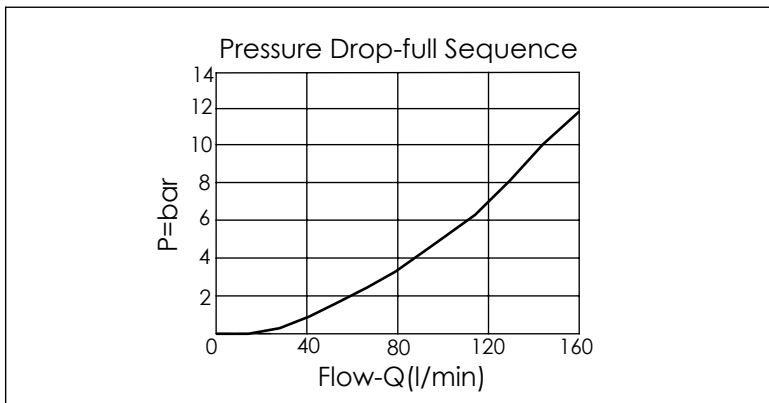
Aluminum Body Pressure Rating: 210 bar  
 Ductile Iron  
 Body Pressure Rating: 350 bar

Rated flow: 80 l/min

Cartridge Valve:  
 Refer to SP2A-X-Y-Z  
 \* Refer to Winner Cartridge Valve Catalog.

Aluminum	0.75 kg(WITHOUT VALVE) 1.05 kg(INCLUDE VALVE)
Ductile Iron	2.1 kg(WITHOUT VALVE) 2.4 kg(INCLUDE VALVE)

\* If you need the special specification.  
 Please contact us.



<b>X</b>	<b>SELECTION FOR P PORT CONTROL</b>
<b>2A3</b>	CAVITY ONLY (WITHOUT VALVE)
<b>SP0A</b>	SP2A30AL (120 LPM , 7-210bar)
Please refer to the list price of cartridge program.	

<b>Y</b>	<b>SELECTION FOR G PORT</b>
<b>G02</b>	G 1/4"(Metric)
<b>N02</b>	NPT 1/4"(U.S. Units)

<b>Z</b>	<b>BODY MATERIAL</b>
<b>A</b>	HIGH-STRENGTH ALUMINUM
<b>S</b>	DUCTILE IRON