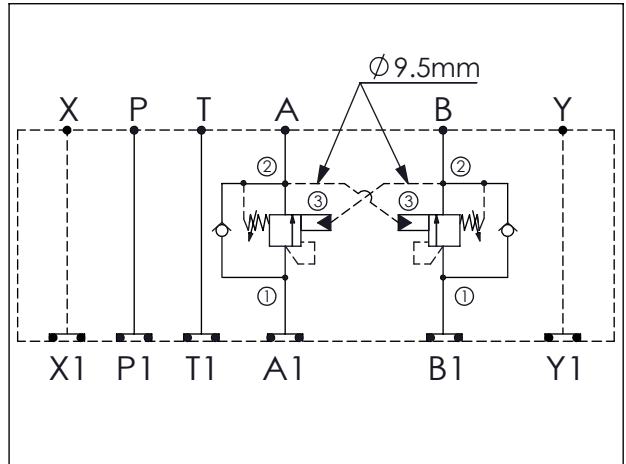
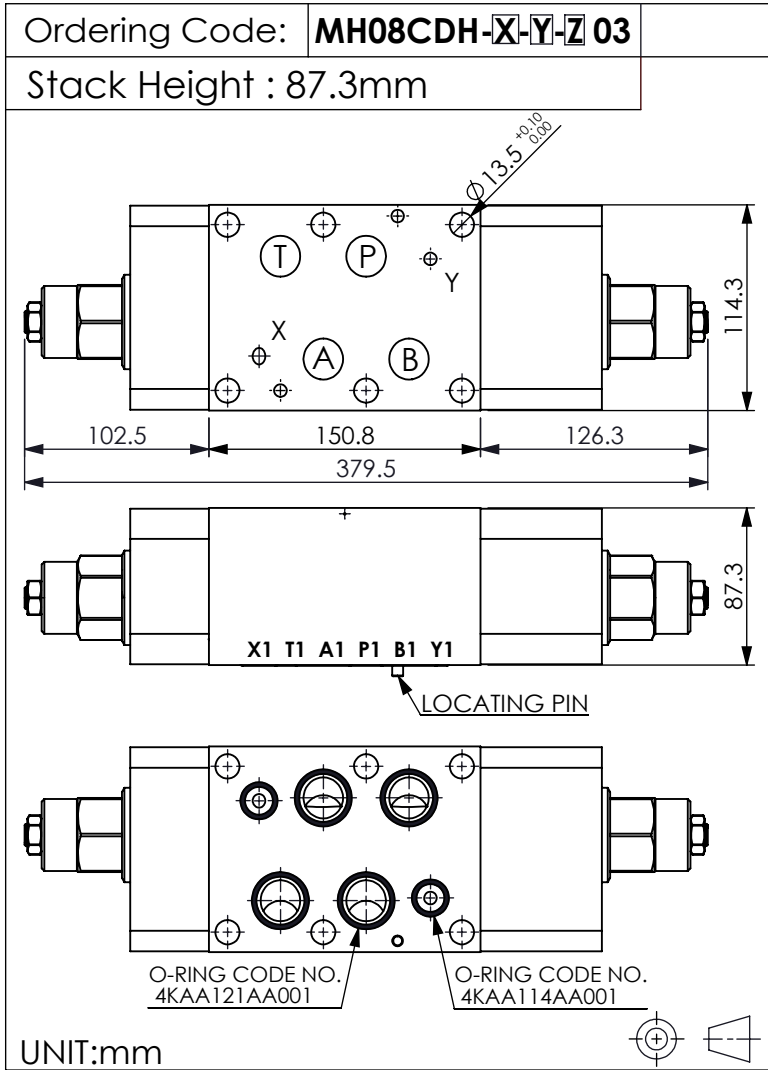


ISO 08 SANDWICH MANIFOLD



TECHNICAL DATA

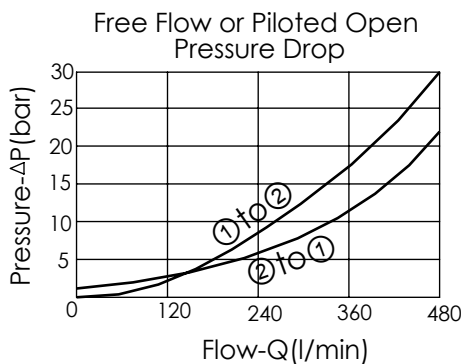
Aluminum Body Pressure Rating: 210 bar
 Ductile Iron
 Body Pressure Rating: 350 bar

Rated flow: 240 l/min

Cartridge Valve:
 Refer to CB19A-X-Y-Z
 * Refer to Winner Cartridge Valve Catalog.

Aluminum	5.21 kg(WITHOUT VALVES) 8.01 kg(INCLUDE VALVES)
Ductile Iron	15.21 kg(WITHOUT VALVES) 18.01 kg(INCLUDE VALVES)

* If you need the special specification.
 Please contact us.



X SELECTION FOR A PORT CONTROL

19A3	CAVITY ONLY(WITHOUT VALVE)
CBCH	CB19A3CHL (3:1 , 280bar)
CBAH	CB19A3AHL (1.5:1 , 280bar)
CBDK	CB19A3DKL (4.5:1 , 175bar)
CBJK	CB19A3JKL (10:1 , 175bar)

Y SELECTION FOR B PORT CONTROL

19A3	CAVITY ONLY(WITHOUT VALVE)
CBCH	CB19A3CHL (3:1 , 280bar)
CBAH	CB19A3AHL (1.5:1 , 280bar)
CBDK	CB19A3DKL (4.5:1 , 175bar)
CBJK	CB19A3JKL (10:1 , 175bar)

Z BODY MATERIAL

A	HIGH-STRENGTH ALUMINUM
S	DUCTILE IRON

Please refer to the list price of cartridge program.