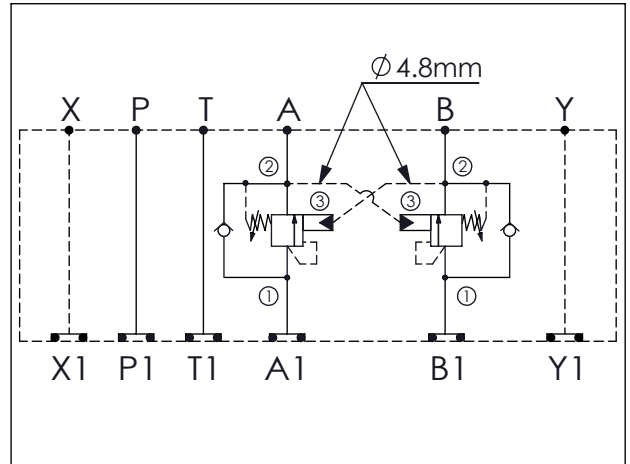


ISO 08 SANDWICH MANIFOLD

Ordering Code: **MH08CDW-X-Y-Z 03**

Stack Height : 87.3mm

UNIT:mm



TECHNICAL DATA

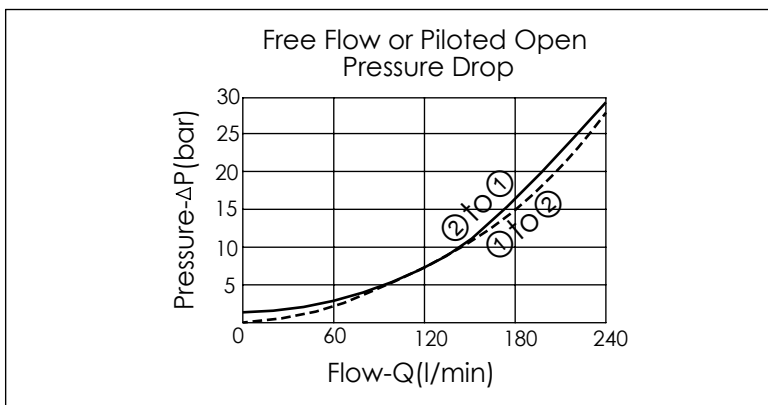
Aluminum Body Pressure Rating: 210 bar
 Ductile Iron
 Body Pressure Rating: 350 bar

Rated flow: 240 l/min

Cartridge Valve:
 Refer to CB17A-X-Y-Z
 * Refer to Winner Cartridge Valve Catalog.

Aluminum	4.26 kg(WITHOUT VALVES) 5.46 kg(INCLUDE VALVES)
Ductile Iron	12.42 kg(WITHOUT VALVES) 13.62 kg(INCLUDE VALVES)

* If you need the special specification.
 Please contact us.



X	SELECTION FOR A PORT CONTROL
17A3	CAVITY ONLY(WITHOUT VALVE)
CBCH	CB17A3CHL (3:1 , 280bar)
CBAH	CB17A3AHL (1.5:1 , 280bar)
CBDK	CB17A3DKL (4.5:1 , 175bar)
CBJK	CB17A3JKL (10:1 , 175bar)

Y	SELECTION FOR B PORT CONTROL
17A3	CAVITY ONLY(WITHOUT VALVE)
CBCH	CB17A3CHL (3:1 , 280bar)
CBAH	CB17A3AHL (1.5:1 , 280bar)
CBDK	CB17A3DKL (4.5:1 , 175bar)
CBJK	CB17A3JKL (10:1 , 175bar)

Z	BODY MATERIAL
A	HIGH-STRENGTH ALUMINUM
S	DUCTILE IRON

Please refer to the list price of cartridge program.