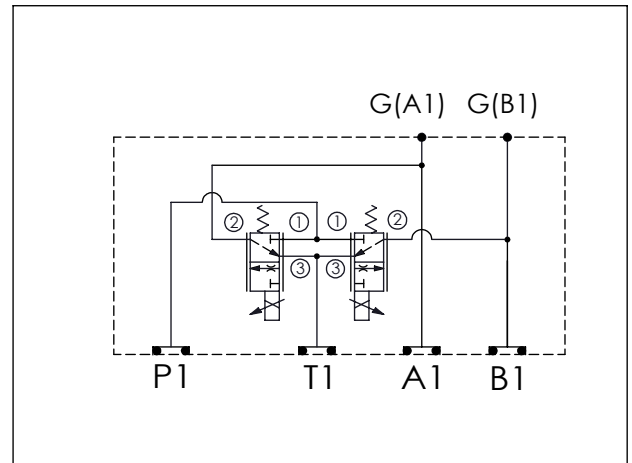


Y	SELECTION FOR B PORT CONTROL (REFER TO PFA11A-X-Y-Z)
<b>11A3</b>	CAVITY ONLY(WITHOUT VALVE)
<b>PFA34</b>	PFA11A3D0340N(0.4~34LPM)
COIL MUST BE ORDERED SEPARATELY (REFER TO EC-19A-X-Y-Z)	



TECHNICAL DATA	
Aluminum (A03)	Body Pressure Rating: 210 bar
Ductile Iron(S03)	Body Pressure Rating: 350 bar
Rated flow:	34 l/min
Cartridge Valve: Refer to PFA11A-X-Y-Z	
* Refer to Winner Cartridge Valves Catalog.	
Aluminum	0.85 kg(WITHOUT VALVES) 1.6 kg(INCLUDE VALVES WITHOUT COIL)
Ductile Iron	2.5 kg(WITHOUT VALVES) 3.25 kg(INCLUDE VALVES WITHOUT COIL)
* If you need the special specification. Please contact us.	

X	SELECTION FOR A PORT CONTROL (REFER TO PFA11A-X-Y-Z)
<b>11A3</b>	CAVITY ONLY(WITHOUT VALVE)
<b>PFA34</b>	PFA11A3D0340N(0.4~34LPM)
COIL MUST BE ORDERED SEPARATELY (REFER TO EC-19A-X-Y-Z)	

Z	PORT SIZE	
	PORTS	G(A1,B1)
<b>G02</b>	G 1/4"(Metric)	
<b>N02</b>	NPT 1/4"(U.S. Units)	
<b>S04</b>	SAE 4	