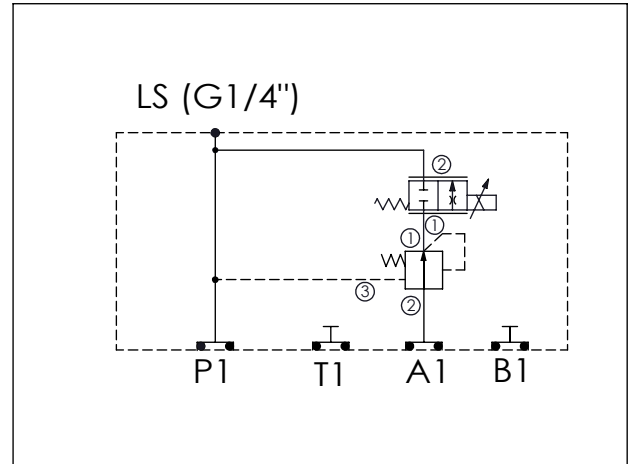


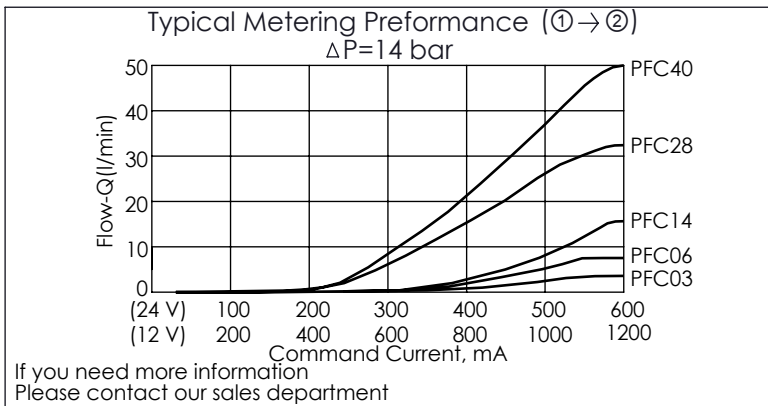
Ordering Code: **MK05EPX-X-Y-Z01**

Stack Height : 49.5mm

UNIT:mm



TECHNICAL DATA	
Aluminum Body Pressure Rating:	210 bar
Ductile Iron Body Pressure Rating:	350 bar
Rated flow:	40 l/min
Cartridge Valve:	Refer to LP11A-X-Y-Z PFC13A-X-Y-Z
* Refer to Winner Cartridge Valves Catalog.	
Aluminum	0.65 kg(WITHOUT VALVES) 1.2 kg(INCLUDE VALVES ,WITHOUT COIL)



Y	SELECTION FOR FLOW CONTROL VALVE (REFER TO PFC13A-X-Y-Z)
<b>13A2</b>	CAVITY ONLY(WITHOUT VALVE)
<b>PFC03</b>	PFC13A2D0030N(0.3~3LPM)
<b>PFC06</b>	PFC13A2D0060N(0.4~6LPM)
<b>PFC14</b>	PFC13A2D0140N(0.6~14LPM)
<b>PFC28</b>	PFC13A2D0280N(0.8~28LPM)
<b>PFC40</b>	PFC13A2D0400N(1.0~40LPM)
COIL MUST BE ORDERED SEPARATELY (REFER TO EC-19A-X-Y-Z)	

X	SELECTION FOR COMPENSATOR
<b>11A3</b>	CAVITY ONLY(WITHOUT VALVE)
<b>LP140</b>	LP11A30140N(60LPM,14.0bar)
Please refer to the list price of cartridge program.	

Z	BODY MATERIAL
<b>A</b>	HIGH-STRENGTH ALUMINUM