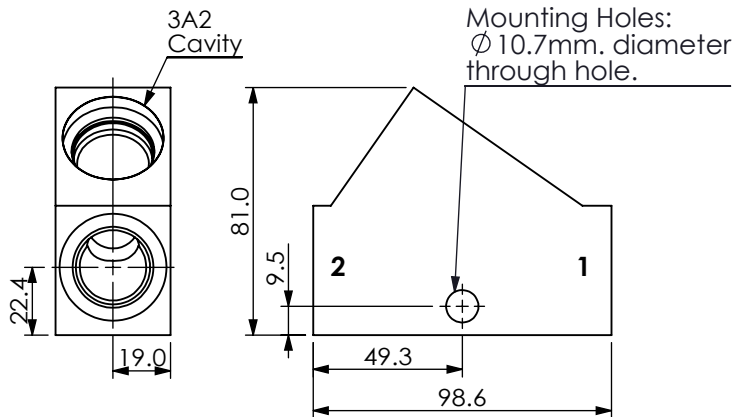
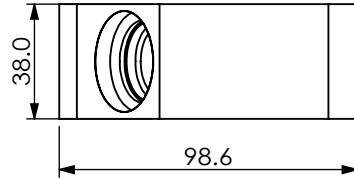
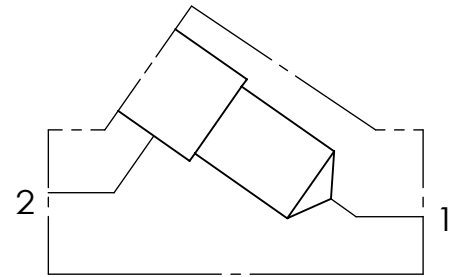


Ordering Code: **ML-3A2-X-Y 41-Z**



UNIT:mm



TECHNICAL DATA

Aluminum Body Pressure Rating: 210 bar
 Ductile Iron Body Pressure Rating: 350 bar

Cavity:

Refer to 3A2

* Refer to Winner Cartridge Valves Catalog.

Aluminum	0.42 kg(WITHOUT VALVES)
Ductile Iron	1.23 kg(WITHOUT VALVES)

* If you need the special specification. Please contact us.

PORT SIZE

X	PORT		
	1	2	
G06	G 3/4"	G 3/4"	
S08	SAE 8	SAE 8	

Y BODY MATERIAL

C	HIGH-STRENGTH ALUMINUM (Clear anodize)	
A	HIGH-STRENGTH ALUMINUM	
S	DUCTILE IRON	

Z CARTRIDGE VALVES SELECTION

	WITHOUT VALVE	
RP0A	RP3A20AL(200 LPM,7~210 bar)	
RD5A	RD3A25AL(200 LPM,35~210 bar)	

Standard option of Aluminum surface treatments is Clear Anodize. If other option is required (for example: black anodize), please contact sale dept.

Please refer to the list price of cartridge program.