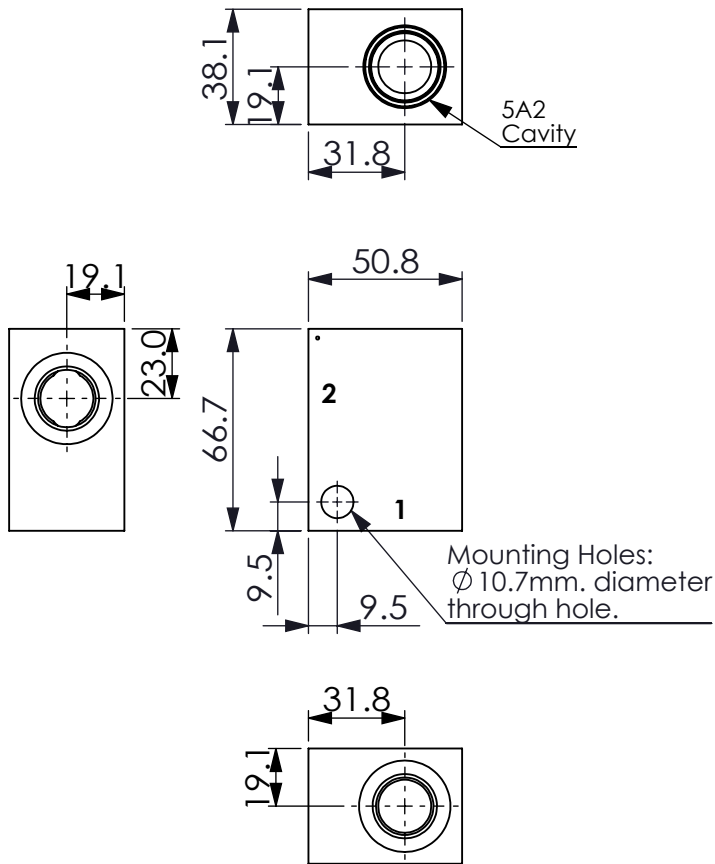
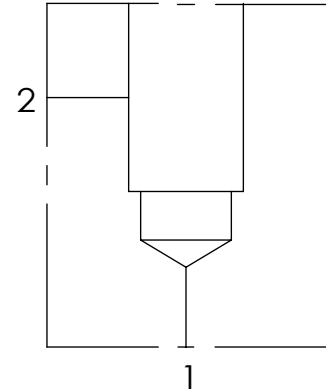


Ordering Code: **ML-5A2-X-Y 01-Z**



UNIT:mm



TECHNICAL DATA

Aluminum Body Pressure Rating: 210 bar
Steel Body Pressure Rating: 350 bar

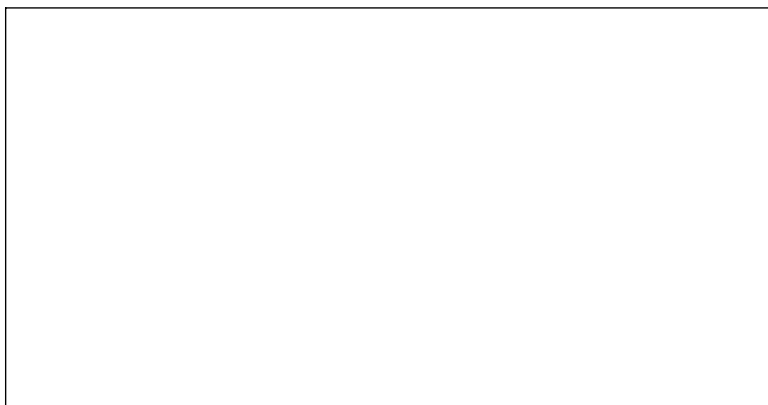
Cavity:

Refer to 5A2

* Refer to Winner Cartridge Valves Catalog.

Aluminum	0.25 kg(WITHOUT VALVES)
Steel	0.75 kg(WITHOUT VALVES)

* If you need the special specification. Please contact us.



PORT SIZE

X	PORT		
	1	2	
G03	G 3/8"	G 3/8"	
G04	G 1/2"	G 1/2"	
S06	SAE 6	SAE 6	
S08	SAE 8	SAE 8	
S10	SAE 10	SAE 10	

Y BODY MATERIAL

A	HIGH-STRENGTH ALUMINUM	
T	STEEL (black oxide)	

Z CARTRIDGE VALVES SELECTION

	WITHOUT VALVE
CV2003	CV5A2003N(160LPM,0.3bar)
FR0A	FR5A20AL(45LPM,350bar)
NV33	NV5A2033L(350bar)

Please refer to the list price of cartridge program.