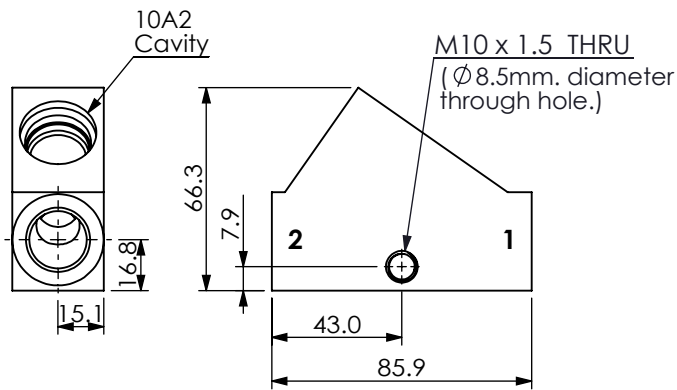
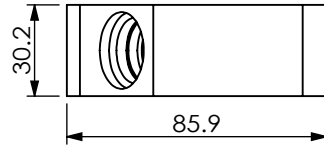
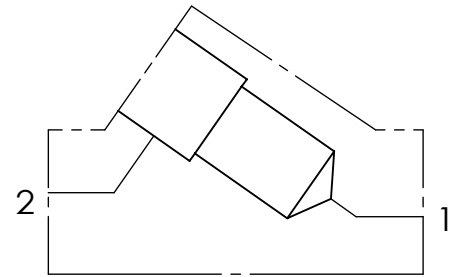


Ordering Code: **ML-10A2-X-Y 61-Z**



UNIT:mm



TECHNICAL DATA

Aluminum Body Pressure Rating: 210 bar
Steel Body Pressure Rating: 350 bar

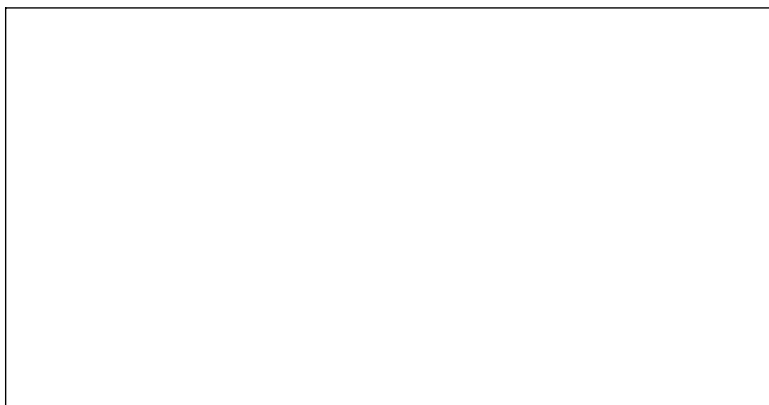
Cavity:

Refer to 10A2

* Refer to Winner Cartridge Valves Catalog.

Aluminum	0.24 kg(WITHOUT VALVES)

* If you need the special specification. Please contact us.



X	PORT SIZE		
	PORT	PORT	
	1	2	
G04	G 1/2"	G 1/2"	

Y	BODY MATERIAL
A	HIGH-STRENGTH ALUMINUM

Z	CARTRIDGE VALVES SELECTION
	WITHOUT VALVE
RPOA	RP10A20AL(95 LPM,7~210 bar)
RD5A	RD10A25AL(95 LPM,35~210 bar)

Please refer to the list price of cartridge program.