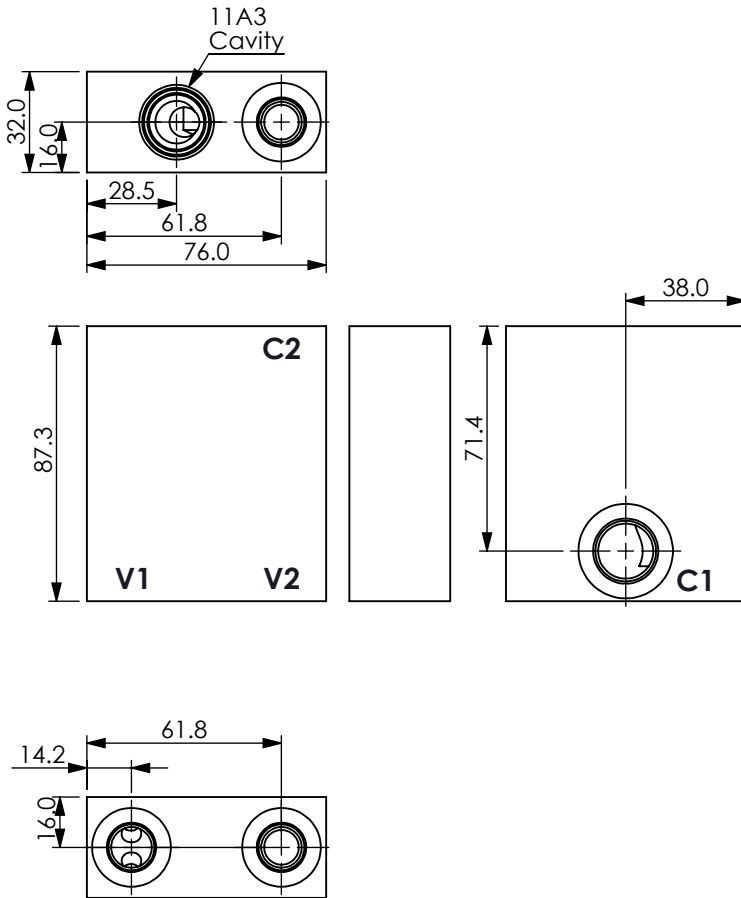
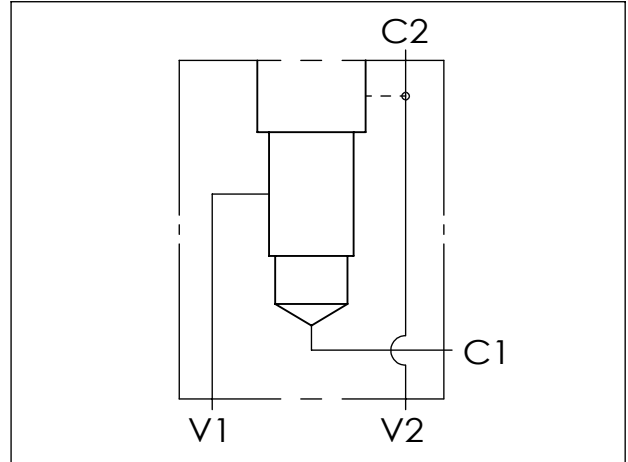
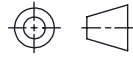


LINE MOUNT BODIES

Ordering Code: **ML-11A3-X-Y 06-Z**



UNIT:mm



TECHNICAL DATA

Aluminum Body Pressure Rating: 210 bar

Steel Body Pressure Rating: 350 bar

Cavity:

Refer to 11A3

* Refer to Winner Cartridge Valves Catalog.

Aluminum	0.47 kg(WITHOUT VALVES)
----------	-------------------------

* If you need the special specification. Please contact us.

X	PORT SIZE	
	PORT	PORTS
	C1	C2,V1,V2
S08A	SAE 8	SAE 6

Y	BODY MATERIAL
A	HIGH-STRENGTH ALUMINUM

Z	CARTRIDGE VALVES SELECTION
	WITHOUT VALVE
CB3H	CB11A33HL (3:1,70-280bar)
CO03	CO11A3003N (60LPM,0.3bar)

Please refer to the list price of cartridge program.