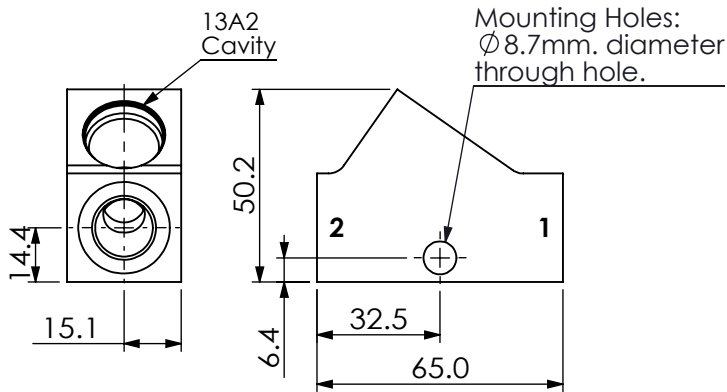
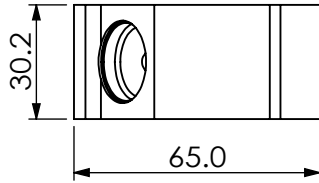
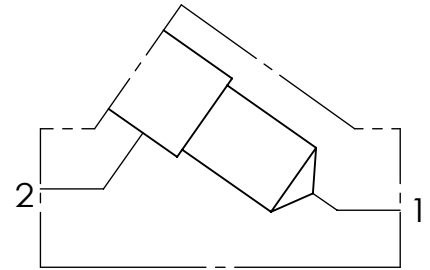


Ordering Code: **ML-13A2-X-Y 41-Z**



UNIT:mm



TECHNICAL DATA

Aluminum Body Pressure Rating: 210 bar
 Ductile Iron Body Pressure Rating: 350 bar

Cavity:

Refer to 13A2

* Refer to Winner Cartridge Valves Catalog.

Aluminum	0.14 kg(WITHOUT VALVES)
Ductile Iron	0.42 kg(WITHOUT VALVES)

* If you need the special specification. Please contact us.

X	PORT SIZE		
	PORT 1	PORT 2	
A02	1/4"NPT	1/4"NPT	
G02	G 1/4"	G 1/4"	
G03	G 3/8"	G 3/8"	
S06	SAE 6	SAE 6	
S08	SAE 8	SAE 8	

Y	BODY MATERIAL	
C	HIGH-STRENGTH ALUMINUM (Clear anodize)	
A	HIGH-STRENGTH ALUMINUM	
S	DUCTILE IRON	

If black anodizing or any other surface treatment is required, please contact Winner's sales department.

Z	CARTRIDGE VALVES SELECTION
	WITHOUT VALVE
CV2003	CV13A2003N (80LPM,0.3bar)
NV48	NV13A2048L (350bar)
NCBA	NC13A21BAL (0.3bar)
FR0A	FR13A20AL (23LPM,350bar)
LS0G	LS13A20NG02 (10LPM)

Please refer to the list price of cartridge program.