

Ordering Code: **ML-18A2-X-Y 03-Z**

114.3
57.2
50.0
100.0
18A2 Cavity

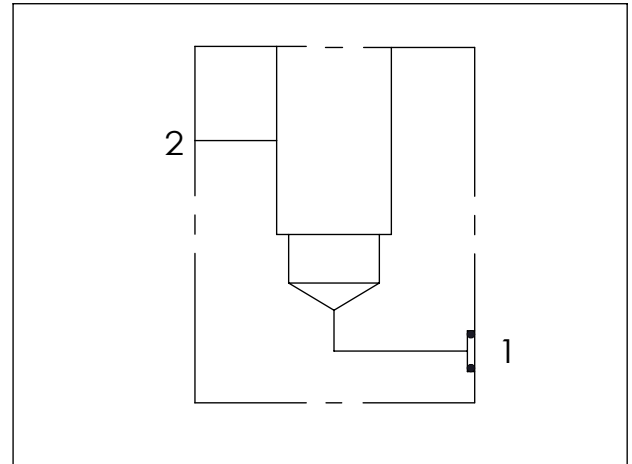
57.2
49.2
138.1
57.2
92.1

Mounting Holes:
Inch: 1/2"-13UNC-2B
*19.1mm deep.
Metric: M12*1.75-6H
*19.1mm deep.
2 places

2" Code 61
4-Bolt Flang Pattern
2 places

O-RING CODE NO.
4KAA228AA001

UNIT:mm



TECHNICAL DATA

Steel Body Pressure Rating: 350 bar

Cavity:

Refer to 18A2

* Refer to Winner Cartridge Valves Catalog.

Steel	10.0 kg(WITHOUT VALVES)

* If you need the special specification.
Please contact us.

X	PORT SIZE			
	PORT	PORT	MOUNTING DIMENSIONS	
	1	2		
F61M16	2" Code 61 (5000 psi) 4-Bolt Flang Pattern	2" Code 61 (5000 psi) 4-Bolt Flang Pattern	Metric	M12 x 1.75-6H
F61E16	2" Code 61 (5000 psi) 4-Bolt Flang Pattern	2" Code 61 (5000 psi) 4-Bolt Flang Pattern	Inch	1/2"-13UNC-2B

Y	BODY MATERIAL
T	STEEL (black oxide)

Z	CARTRIDGE VALVES SELECTION
	WITHOUT VALVE
RPOA	RP18A20AL (760LPM,7-210bar)
CV2003	CV18A2003N (640LPM,0.3bar)
FROA	FR18A20AL (1.0 to 200LPM)
Please refer to the list price of cartridge program.	