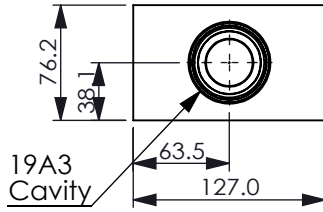
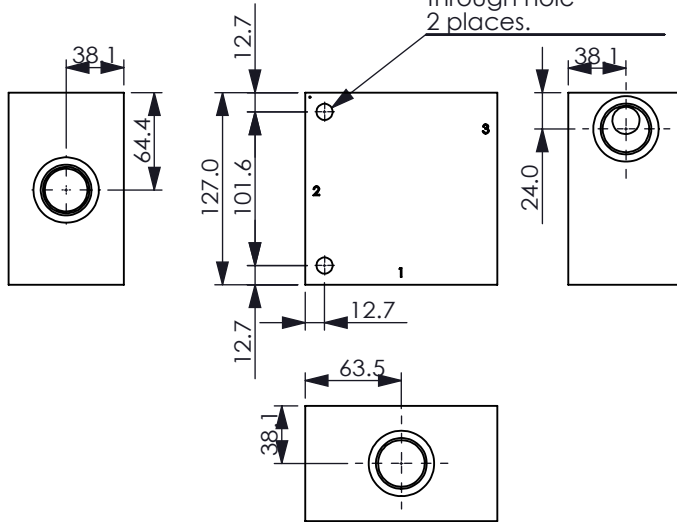


Ordering Code: **ML-19A3-X-Y 01-Z**

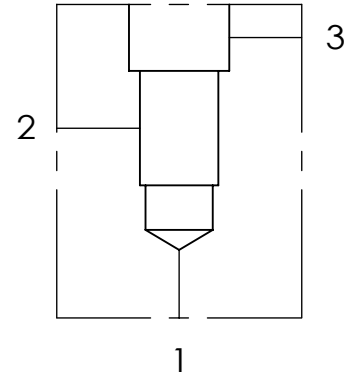


19A3  
Cavity

Mounting Holes:  
Ø 10.7mm. diameter  
through hole  
2 places.



UNIT:mm



### TECHNICAL DATA

Aluminum Body Pressure Rating: 210 bar

Steel Body Pressure Rating: 350 bar

Cavity:

Refer to 19A3

\* Refer to Winner Cartridge Valve Catalog.

Aluminum	2.61 kg(WITHOUT VALVES)
----------	-------------------------

Steel	7.65 kg(WITHOUT VALVES)
-------	-------------------------

\* If you need the special specification.  
Please contact us.

### PORT SIZE

X	PORTS		
	1,2	3	
<b>G08</b>	G 1"	G 1"	
<b>G10</b>	G 1-1/4"	G 1-1/4"	
<b>S16</b>	SAE 16	SAE 16	

### Y BODY MATERIAL

**A HIGH-STRENGTH ALUMINUM**

**T STEEL (black oxide)**

### Z CARTRIDGE VALVES SELECTION

WITHOUT VALVE

**PPOA** PP19A30AL (320LPM,7-210bar)

**PDOA** PD19A30AL (320LPM,50-210bar)

Please refer to the list price of cartridge program.