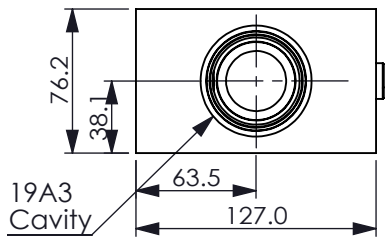


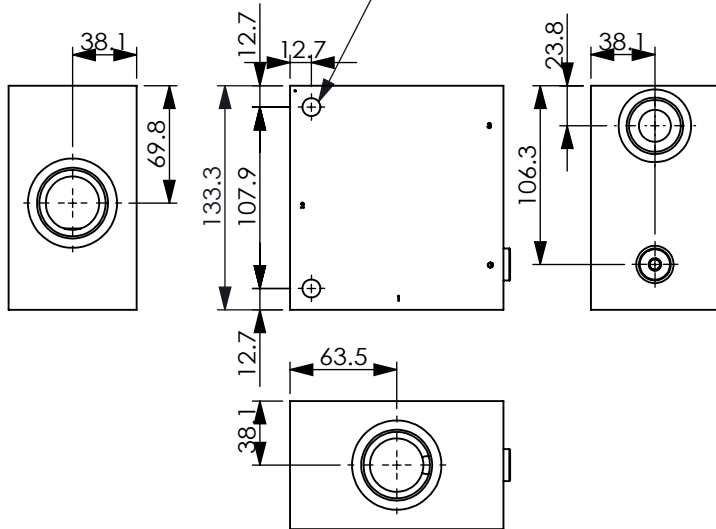
LINE MOUNT BODIES

Ordering Code: **ML-19A3-X-Y 03-Z**

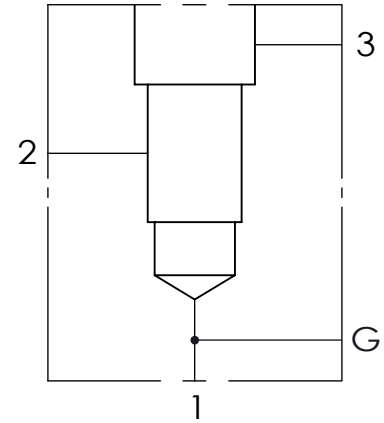


19A3
Cavity

Mounting Holes:
10.7mm. diameter
through hole
2 places.



UNIT:mm



TECHNICAL DATA

Aluminum Body Pressure Rating: 210 bar

Steel Body Pressure Rating: 350 bar

Cavity:

Refer to 19A3

* Refer to Winner Cartridge Valve Catalog.

Aluminum	2.66 kg(WITHOUT VALVES)
----------	-------------------------

Steel	7.76 kg(WITHOUT VALVES)
-------	-------------------------

* If you need the special specification.
Please contact us.

PORT SIZE

X	PORTS	PORT	PORT
	1,2	3	G
G10BG	G 1-1/4"	G 1"	G 1/4"

Y BODY MATERIAL

A HIGH-STRENGTH ALUMINUM

T STEEL (black oxide)

Z CARTRIDGE VALVES SELECTION

WITHOUT VALVE

PPOA PP19A30AL (320LPM,7-210bar)

PDOA PD19A30AL (320LPM,50-210bar)

Please refer to the list price of cartridge program.