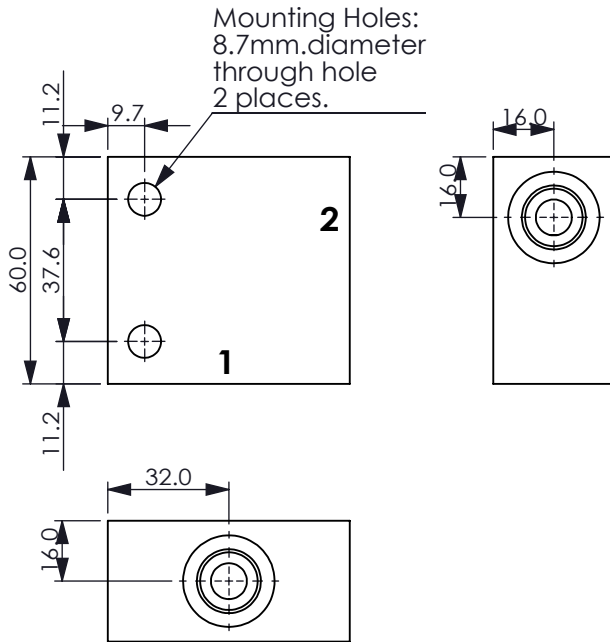
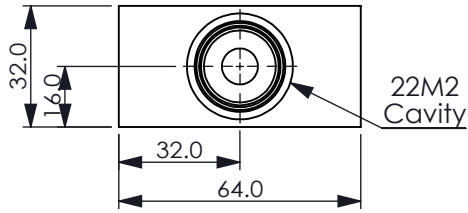
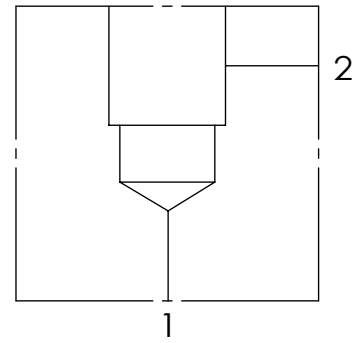


Ordering Code: **ML-22M2-X-Y 01-Z**



UNIT:mm



TECHNICAL DATA

Aluminum Body Pressure Rating: 210 bar

Steel Body Pressure Rating: 350 bar

Cavity:

Refer to 22M2

* Refer to Winner Cartridge Valves Catalog.

Aluminum	0.27 kg(WITHOUT VALVES)
----------	-------------------------

Steel	0.79 kg(WITHOUT VALVES)
-------	-------------------------

* If you need the special specification.
Please contact us.

PORT SIZE

X	PORT		
	1	2	
G02	G 1/4"	G 1/4"	
G03	G 3/8"	G 3/8"	

Y BODY MATERIAL

A HIGH-STRENGTH ALUMINUM

T STEEL (black oxide)

Z CARTRIDGE VALVES SELECTION

WITHOUT VALVE