

TECHNICAL DATA

Aluminum Body Pressure Rating: 210 bar

Steel Body Pressure Rating: 350 bar

Cavity:

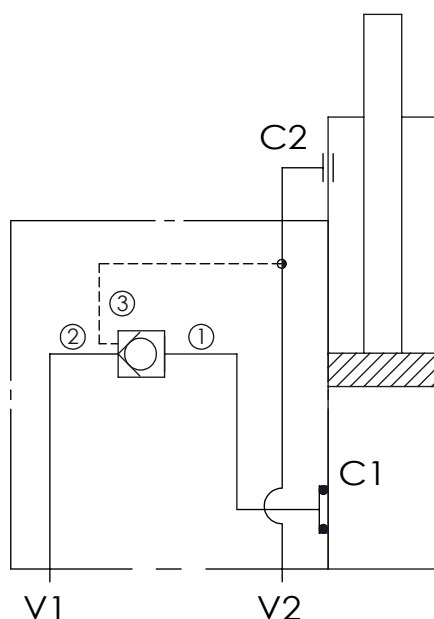
Refer to 11A3

* Refer to Winner Cartridge Valves Catalog.

Aluminum	0.4 kg(WITHOUT VALVES)
Steel	1.12 kg(WITHOUT VALVES)

* If you need the special specification. Please contact us.

TYPICAL CIRCUIT:



X CARTRIDGE VALVES SELECTION

11A3	CAVITY ONLY(WITHOUT VALVE)
CO20	CO11A3020N (60LPM,2.0bar)
CO03	CO11A3003N (60LPM,0.3bar)
CO50	CO11A3050N (60LPM,5.0bar)

PORT SIZE

Y	PORTS	PORT	
	V1,V2	C2	
G03	G 3/8"	G 3/8"	
S06	SAE 6	SAE 6	

Z BODY MATERIAL

A	HIGH-STRENGTH ALUMINUM	
T	STEEL (black oxide)	