

TECHNICAL DATA

Aluminum Body Pressure Rating: 210 bar

Steel Body Pressure Rating: 350 bar

Cavity:

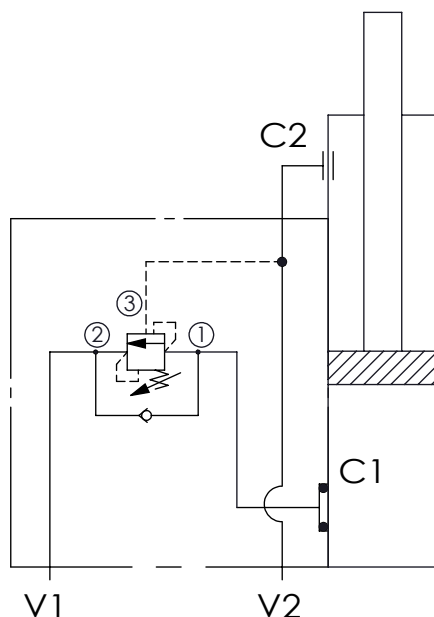
Refer to 17A3

* Refer to Winner Cartridge Valves Catalog.

| | |
|----------|-------------------------|
| Aluminum | 1.61 kg(WITHOUT VALVES) |
| | |

* If you need the special specification. Please contact us.

TYPICAL CIRCUIT:



X CARTRIDGE VALVES SELECTION

17A3 CAVITY ONLY(WITHOUT VALVE)

CBCH CB17A3CHL (3:1 , 280bar)

PORT SIZE

| Y | PORTS | PORT | |
|------------|---------|---------|--|
| | V1,V2 | C2 | |
| A06 | 3/4"NPT | 3/4"NPT | |

Z BODY MATERIAL

| | | |
|----------|------------------------|--|
| A | HIGH-STRENGTH ALUMINUM | |
| | | |