

### TECHNICAL DATA

Aluminum (A01)	
Body Pressure Rating:	210 bar
Steel (T01)	
Body Pressure Rating:	350 bar

Cavity:  
Refer to 11A3

\* Refer to Winner Cartridge Valves Catalog.

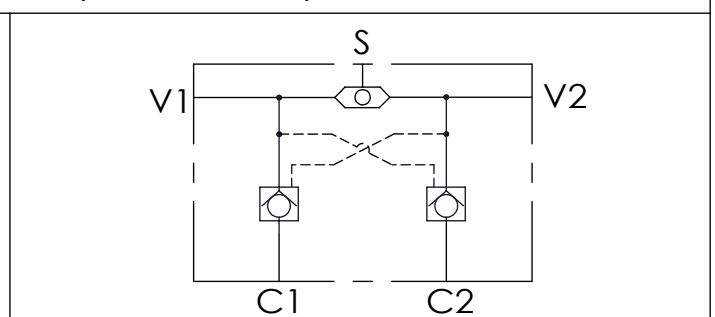
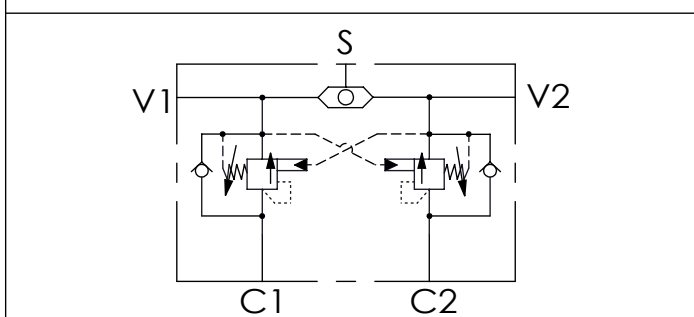
Aluminum	0.49 kg(WITHOUT VALVES)
Steel	1.43 kg(WITHOUT VALVES)

\* If you need the special specification.  
Please contact us.

Z	PORT SIZE		
	PORTS V1,V2	PORTS C1,C2	PORT S
<b>G02</b>	G 1/4"	G 1/4"	G 1/4"
<b>G04</b>	G 1/2"	G 1/2"	G 1/4"
<b>S08</b>	SAE 8	SAE 8	SAE 4

X	SELECTION FOR V1 PORT CONTROL
<b>11A3</b>	CAVITY ONLY(WITHOUT VALVE)
<b>CB3H</b>	CB11A33HL (3:1 , 280bar)
<b>CO20</b>	CO11A3020N (2.0bar)
Y	SELECTION FOR V2 PORT CONTROL
<b>11A3</b>	CAVITY ONLY(WITHOUT VALVE)
<b>CB3H</b>	CB11A33HL (3:1 , 280bar)
<b>CO20</b>	CO11A3020N (2.0bar)

### HYDRAULIC CIRCUITS(WITH VALVES)



Ordering Code: **ML-60-CDK-CB3H-CB3H-Z-A01**

Ordering Code: **ML-60-CDK-CO20-CO20-Z-A01**