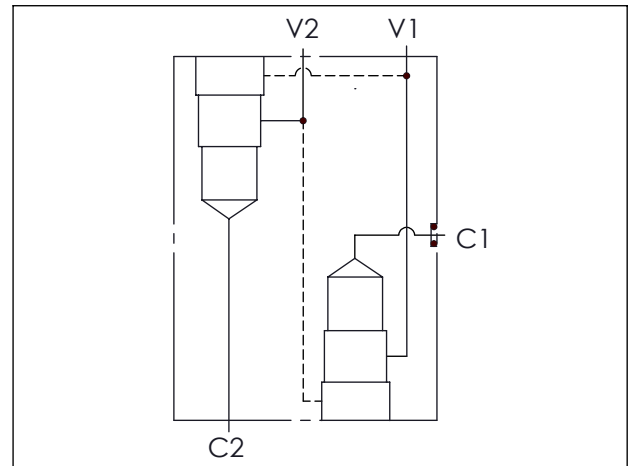
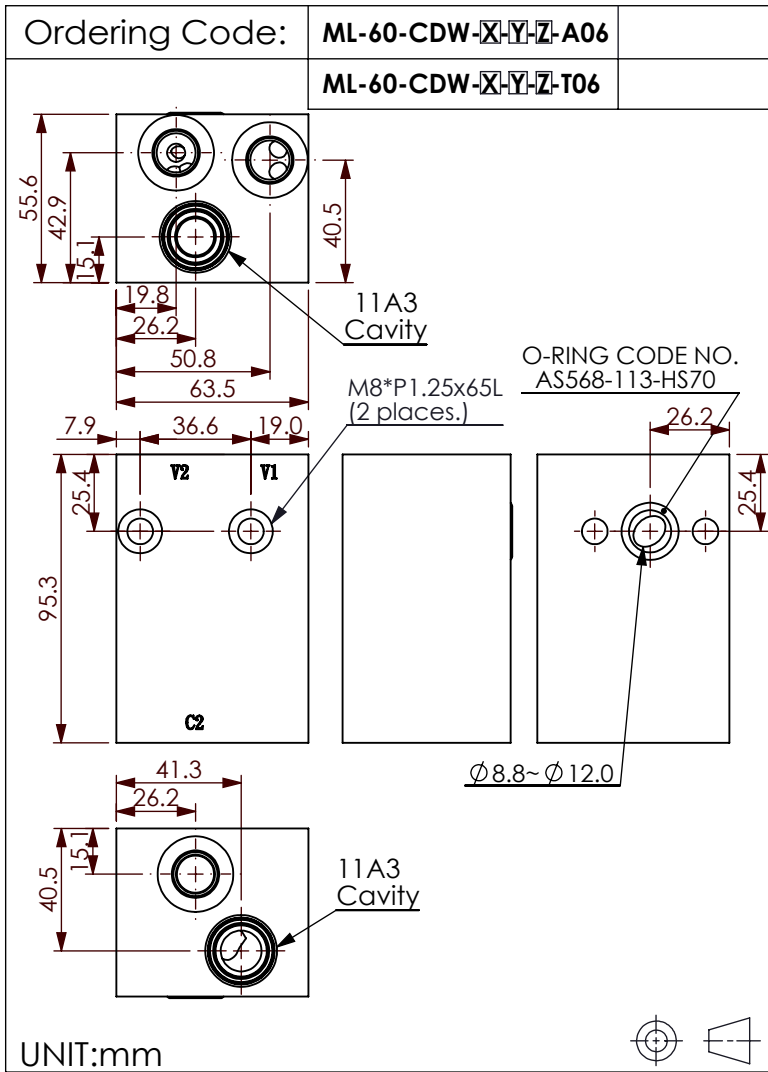


LINE MOUNT BODIES



TECHNICAL DATA

Aluminum (A06)	
Body Pressure Rating:	210 bar
Steel (T06)	
Body Pressure Rating:	350 bar

Cavity:
Refer to 11A3

* Refer to Winner Cartridge Valves Catalog.

Aluminum	0.75 kg(WITHOUT VALVES)
Steel	2.18 kg(WITHOUT VALVES)

* If you need the special specification.
Please contact us.

X	CARTRIDGE VALVES SELECTION
11A3	CAVITY ONLY(WITHOUT VALVE)
CB3H	CB11A33HL (3:1 , 280bar)
CB4J	CB11A34JL (4.5:1 , 350bar)
CB0J	CB11A30JL (10:1 , 350bar)
Please refer to the list price of cartridge program.	

Y	CARTRIDGE VALVES SELECTION
11A3	CAVITY ONLY(WITHOUT VALVE)
CB3H	CB11A33HL (3:1 , 280bar)
CB4J	CB11A34JL (4.5:1 , 350bar)
CB0J	CB11A30JL (10:1 , 350bar)
Please refer to the list price of cartridge program.	

Z	PORT SIZE	
	PORTS	PORT
	V1,V2	C2
G03	G 3/8"	G 3/8"
S06	SAE 6	SAE 6