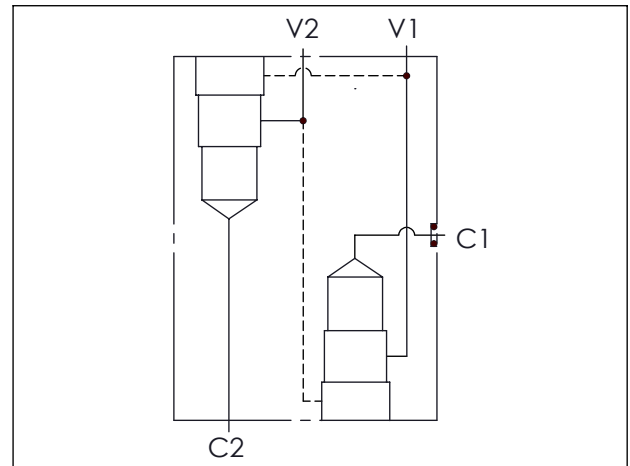
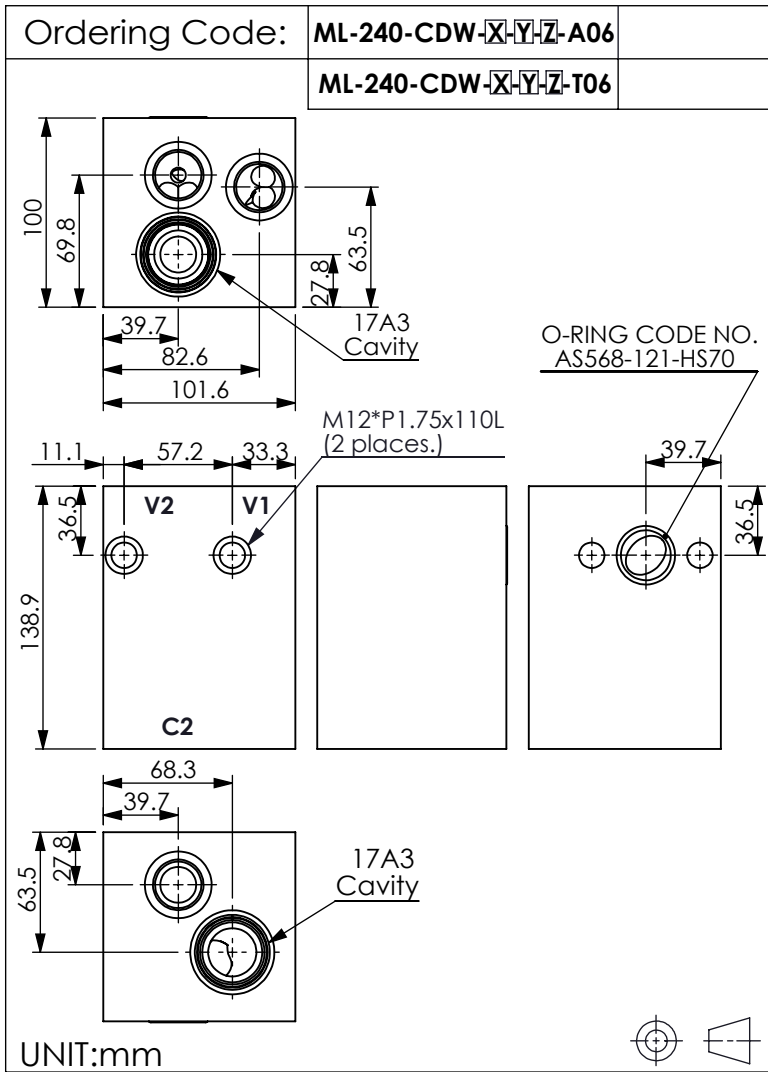


## LINE MOUNT BODIES



### TECHNICAL DATA

Aluminum (A06)	
Body Pressure Rating:	210 bar
Steel (T06)	
Body Pressure Rating:	350 bar

Cavity:  
Refer to 17A3

\* Refer to Winner Cartridge Valves Catalog.

Aluminum	3.04 kg(WITHOUT VALVES)
Steel	8.88 kg(WITHOUT VALVES)

\* If you need the special specification.  
Please contact us.

<b>X</b>	<b>CARTRIDGE VALVES SELECTION</b>
<b>17A3</b>	CAVITY ONLY(WITHOUT VALVE)
<b>CBCH</b>	CB17A3CHL (3:1 , 280bar)
Please refer to the list price of cartridge program.	

<b>Y</b>	<b>CARTRIDGE VALVES SELECTION</b>
<b>17A3</b>	CAVITY ONLY(WITHOUT VALVE)
<b>CBCH</b>	CB17A3CHL (3:1 , 280bar)
Please refer to the list price of cartridge program.	

	<b>PORT SIZE</b>		
<b>Z</b>	<b>PORTS</b>	<b>PORT</b>	
	<b>V1,V2</b>	<b>C2</b>	
<b>A06</b>	3/4"NPT	3/4"NPT	
<b>G06</b>	G 3/4"	G 3/4"	