

Ordering Code: **ML-480-CDW-X-Y-Z-T01**

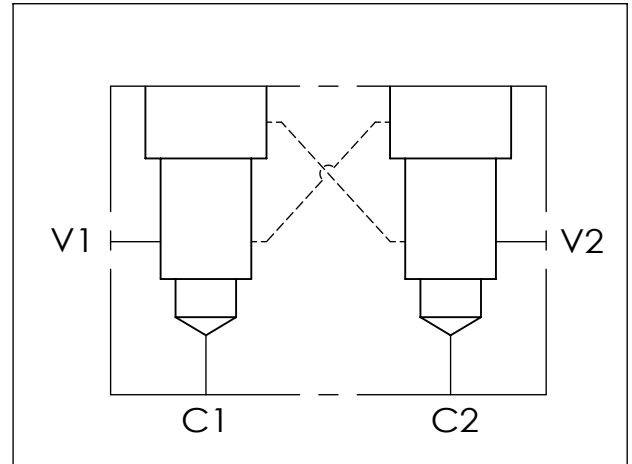
Mounting Holes:
Inch: 5/8"-11 UNC-2B
x34.9mm.deep.
Metric: M16 x 2.0-6H
x34.9mm.deep.
16 places.

19A3 Cavity

1-1/2" Code 62
4-Bolt Flang Pattern
4 places

Mounting Holes:
Inch: 3/8"-16 UNC-2B
x15.7mm.deep.
Metric: M10 x 1.50-6H
x15.7mm.deep.
4 places.

UNIT:mm



TECHNICAL DATA

Steel Body Pressure Rating: 350 bar

Cavity:
Refer to 19A3

* Refer to Winner Cartridge Valves Catalog.

Steel	21.43 kg (WITHOUT VALVES)
-------	---------------------------

* If you need the special specification.
Please contact us.

X	SELECTION FOR V1 PORT CONTROL
19A3	CAVITY ONLY (WITHOUT VALVE)
CBCH	CB19A3CHL (3:1 , 280bar)
CO20	CO19A3020N (2.0bar)

Please refer to the list price of cartridge program.

Y	SELECTION FOR V2 PORT CONTROL
19A3	CAVITY ONLY (WITHOUT VALVE)
CBCH	CB19A3CHL (3:1 , 280bar)
CO20	CO19A3020N (2.0bar)

Please refer to the list price of cartridge program.

Z	PORT SIZE		MOUNTING DIMENSIONS	
	PORTS V1,V2	PORTS C1,C2		
F62M12	1-1/2" Code 62 (6000 psi) 4-Bolt Flang Pattern	1-1/2" Code 62 (6000 psi) 4-Bolt Flang Pattern	Metric	M10 x 1.50-6H (MANIFOLD) M16 x 2.00-6H (FLANGE)
F62E12	1-1/2" Code 62 (6000 psi) 4-Bolt Flang Pattern	1-1/2" Code 62 (6000 psi) 4-Bolt Flang Pattern	Inch	3/8"-16 UNC-2B (MANIFOLD) 5/8"-11 UNC-2B (FLANGE)