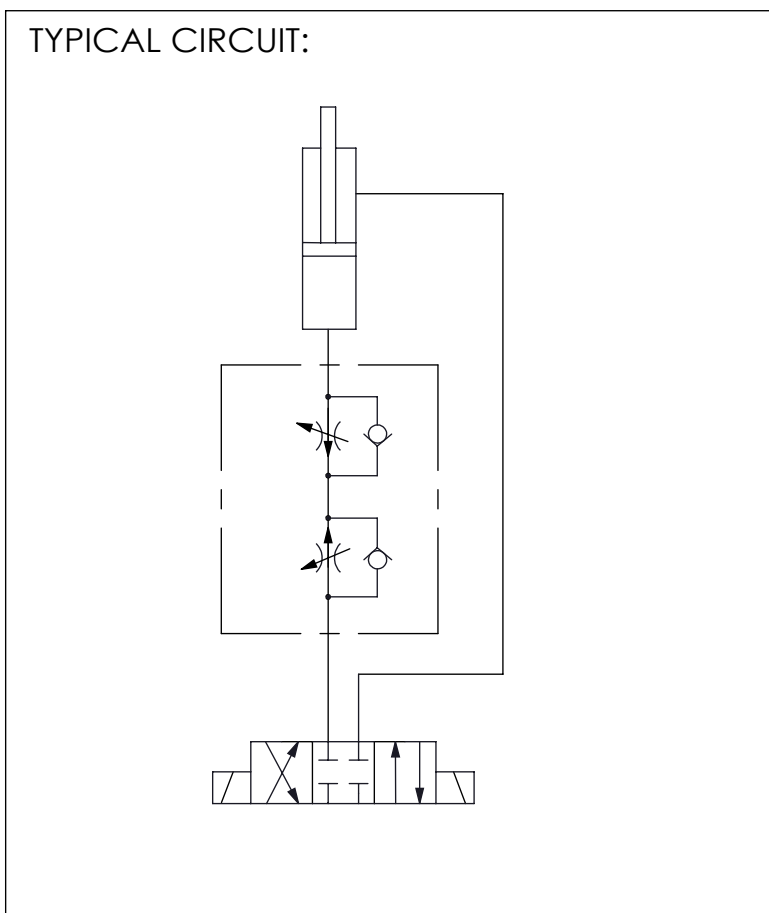


TECHNICAL DATA	
Aluminum Body Pressure Rating:	210 bar
Steel Body Pressure Rating:	350 bar
Cavity: Refer to 13A2 * Refer to Winner Cartridge Valves Catalog.	
Aluminum	0.36 kg(WITHOUT VALVES)
* If you need the special specification. Please contact us.	



X	CARTRIDGE VALVES SELECTION	
13A2	CAVITY ONLY(WITHOUT VALVE)	
FROA	FR13A20AL (23LPM,350bar)	
Please refer to the list price of cartridge program.		
Y	CARTRIDGE VALVES SELECTION	
13A2	CAVITY ONLY(WITHOUT VALVE)	
FROA	FR13A20AL (23LPM,350bar)	
Please refer to the list price of cartridge program.		
Z	PORT SIZE	
	PORT A	PORT B
G03	G 3/8"	G 3/8"