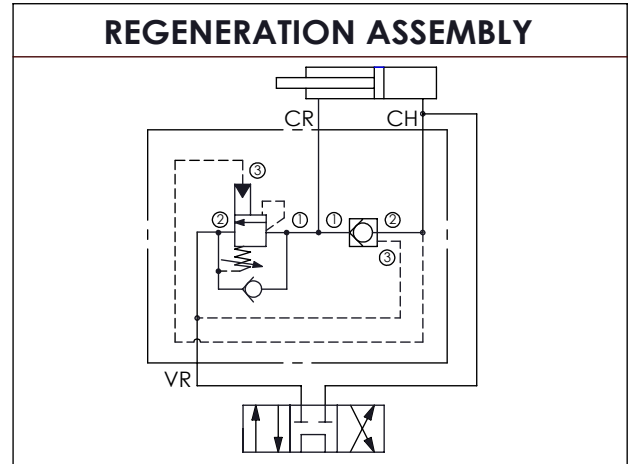


Ordering Code: **ML-100-GCW-X-Y-Z-A01**

UNIT:mm



TECHNICAL DATA

| | |
|---|--|
| Aluminum Body Pressure Rating: | 210 bar |
| Steel Body Pressure Rating: | 350 bar |
| Rated flow: | 100 l/min |
| Cavity: | Refer to CB2A-X-Y-Z CC2A-X-Y-Z |
| * Reference our Cartridge Valves Catalog. | |
| Aluminum | 0.69 kg (WITHOUT VALVES) 1.21 kg (INCLUDE VALVES) |
| * If you need the special specification. Please contact us. | |

| | |
|--|---|
| X | SELECTION FOR COUNTERBALANCE VALVES |
| 2A3 | CAVITY ONLY (WITHOUT VALVE) |
| CB3H | CB2A33HL (3:1 , 280bar) (2.0 bar Cracking Pressure) |
| CB3A | CB2A33AL (3:1 , 280bar) (0.3 bar Cracking Pressure) |
| Please refer to the list price of cartridge program. | |

| | |
|--|-----------------------------------|
| Y | SELECTION FOR CHECK VALVES |
| 2A3 | CAVITY ONLY (WITHOUT VALVE) |
| CC50 | CC2A3050N (160LPM, 5.0bar) |
| Please refer to the list price of cartridge program. | |

| | | |
|------------|------------------|-------------|
| Z | PORT SIZE | |
| | PORTS | PORT |
| | CH, CR | VR |
| G06 | G 3/4" | G 3/4" |
| S12 | SAE 12 | SAE 12 |