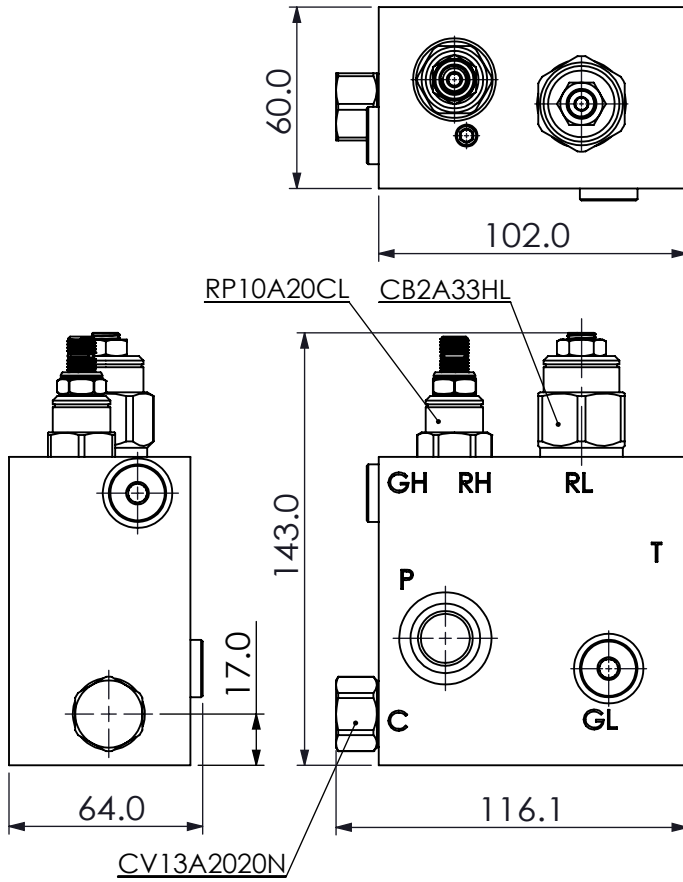
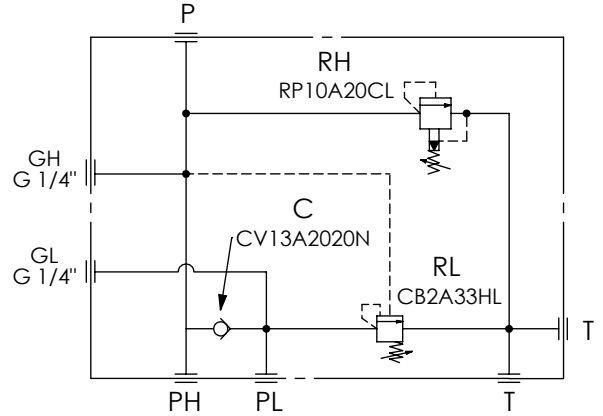


Ordering Code: **ML-60-HLP-X-Y 01**



UNIT:mm



TECHNICAL DATA

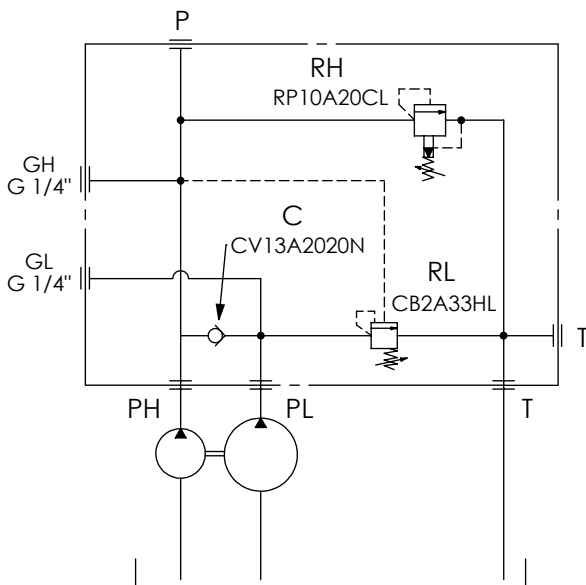
Aluminum Body Pressure Rating: 210 bar
Steel Body Pressure Rating: 350 bar

Cavity:
Refer to CB2A33HL
CV13A2020N
RP10A20CL
* Refer to Winner Cartridge Valve Catalog.

Aluminum	1.36 kg (WITHOUT VALVES) 1.9 kg (INCLUDE VALVES)
Steel	5.5 kg (WITHOUT VALVES) 6.04 kg (INCLUDE VALVES)

* If you need the special specification.
Please contact us.

TYPICAL CIRCUIT:



PORT SIZE

X

PORTS

P,T,PH,PL

G04

G 1/2"

S08

SAE 8

Y

BODY MATERIAL

A

HIGH-STRENGTH ALUMINUM

T

STEEL (black oxide)