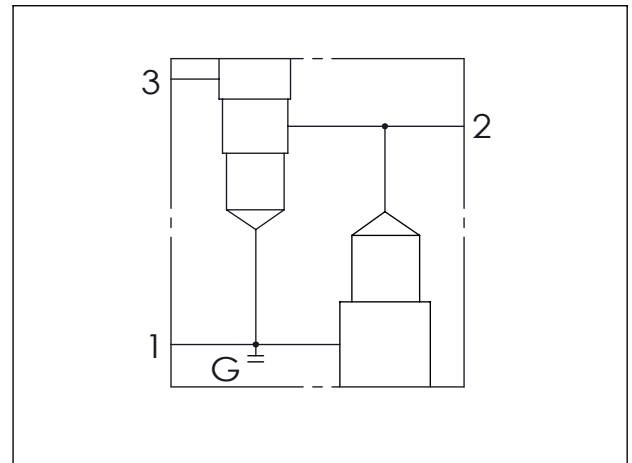
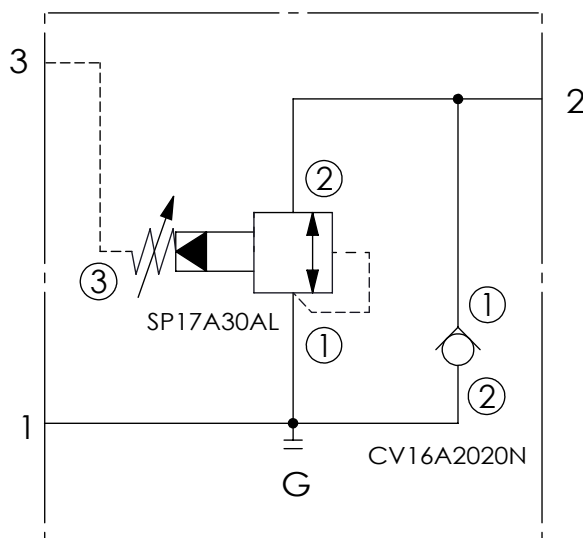


TYPICAL CIRCUIT:

PORT 1 TO PORT 2 SEQUENCE



TECHNICAL DATA

Aluminum (A01)	210 bar
Body Pressure Rating:	
Steel (T01)	350 bar
Body Pressure Rating:	

Cavity: Refer to 17A3 fl16A2
 * Refer to Winner Cartridge Valves Catalog.

Aluminum	2.46 kg(WITHOUT VALVES)
Steel	7.09 kg(WITHOUT VALVES)

* If you need the special specification. Please contact us.

X CARTRIDGE VALVES SELECTION

17A3	CAVITY ONLY(WITHOUT VALVE)
SPOA	SP17A30AL (240LPM , 7-210bar)

Please refer to the list price of cartridge program.

Y SELECTION FOR SOLENOID VALVES (REFER TO CV16A-X-Y-Z)

16A2	CAVITY ONLY(WITHOUT VALVE)
CV2020	CV16A2020N(320LPM,2.0bar)

Please refer to the list price of cartridge program.

PORT SIZE

Z	PORTS		
	1,2	3	G
A06G	3/4"NPT	3/4"NPT	1/4"NPT
G06AG	G 3/4"	G 1/4"	G 1/4"