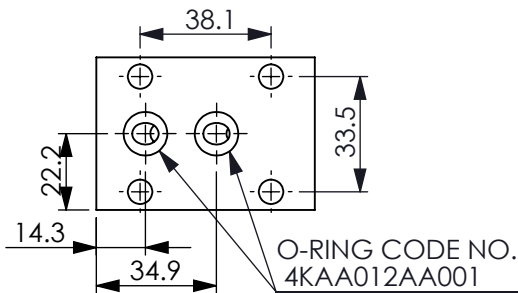
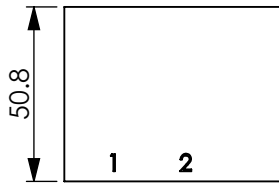
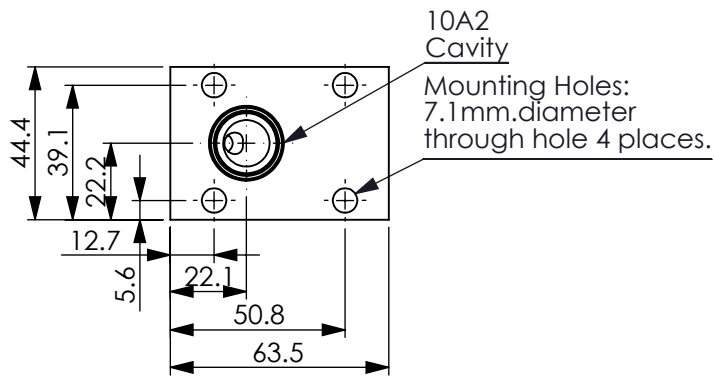
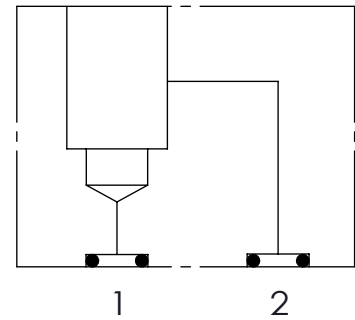


Ordering Code: **ML-95-RAB-Y-Z01**



UNIT:mm



TECHNICAL DATA

Aluminum Body Pressure Rating: 210 bar

Steel Body Pressure Rating: 350 bar

Cavity:

Refer to 10A2

* Refer to Winner Cartridge Valves Catalog.

Aluminum	0.35 kg(WITHOUT VALVES)
----------	-------------------------

* If you need the special specification.
Please contact us.

Y CARTRIDGE VALVES SELECTION

10A2 CAVITY ONLY(WITHOUT VALVE)

RP0A RP10A20AL(95 LPM,7~210 bar)

RD5A RD10A25AL(95 LPM,35~210 bar)

Please refer to the list price of cartridge program.

Z BODY MATERIAL

A HIGH-STRENGTH ALUMINUM