

TECHNICAL DATA

Aluminum Body Pressure Rating: 210 bar
 Steel Body Pressure Rating: 350 bar

Cavity: Refer to 10A2

* Refer to Winner Cartridge Valves Catalog.

Aluminum	0.83 kg(WITHOUT VALVES)

* If you need the special specification. Please contact us.

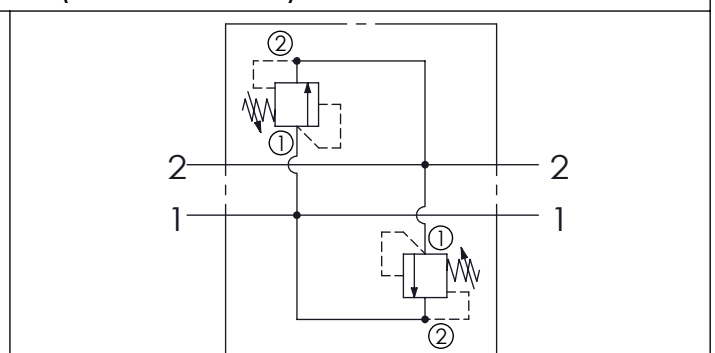
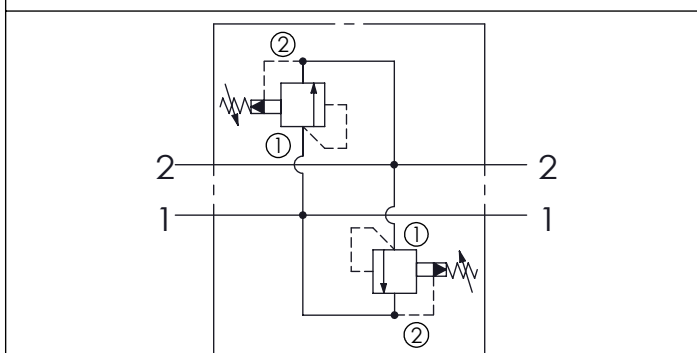
Y	SELECTION FOR V2 PORT CONTROL
10A2	CAVITY ONLY(WITHOUT VALVE)
RP0A	RP10A20AL (95LPM , 7-210bar)
RD5A	RD10A25AL (95LPM,35-210bar)

Please refer to the list price of cartridge program.

X	SELECTION FOR V1 PORT CONTROL
10A2	CAVITY ONLY(WITHOUT VALVE)
RP0A	RP10A20AL (95LPM , 7-210bar)
RD5A	RD10A25AL (95LPM,35-210bar)

Z	PORT SIZE		
	PORT 1	PORT 2	
G08	G1"	G1"	

HYDRAULIC CIRCUITS(WITH VALVES)



Ordering Code: **ML-60-RDH-RP0A-RP0A-Z-A01**

Ordering Code: **ML-60-RDH-RD5A-RD5A-Z-A01**