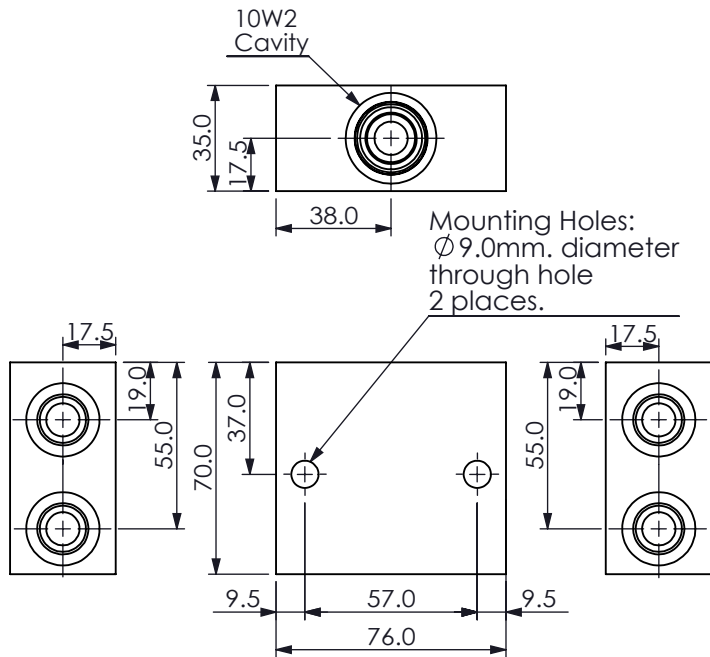
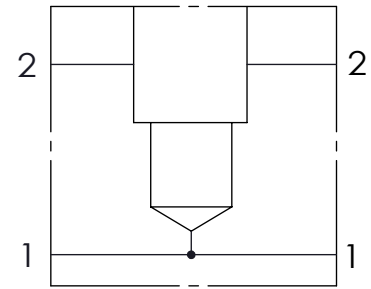


Ordering Code: **ML-10W2-X-Y 02-Z**



UNIT:mm



TECHNICAL DATA

Aluminum Body Pressure Rating: 210 bar

Steel Body Pressure Rating: 350 bar

Cavity:

Refer to 10W2

* Refer to Winner Cartridge Valves Catalog.

Aluminum	0.45 kg(WITHOUT VALVES)
----------	-------------------------

* If you need the special specification.
Please contact us.



PORT SIZE

X	PORT SIZE	
	PORT 1	PORT 2
G03	G 3/8"	G 3/8"

Z CARTRIDGE VALVES SELECTION

WITHOUT VALVE

RP0A	RP10W20AL(95LPM,7-210bar)
CR0A	CR10W20AL (60LPM,240bar)
CV2003	CV10W2003N (0.3bar)
NV0N	NV10W20NL (350bar)
FR18	FR10W2018N (1.8LPM,240bar)
EP01	EP10W2A01N05 , 70LPM,350bar (NORMALLY CLOSED,WITHOUT COIL)
EP02	EP10W2A02N05 , 70LPM,350bar (NORMALLY OPEN,WITHOUT COIL)

COIL MUST BE ORDERED SEPARATELY
(REFER TO EC-04W-X-Y-Z)

Y BODY MATERIAL

A HIGH-STRENGTH ALUMINUM