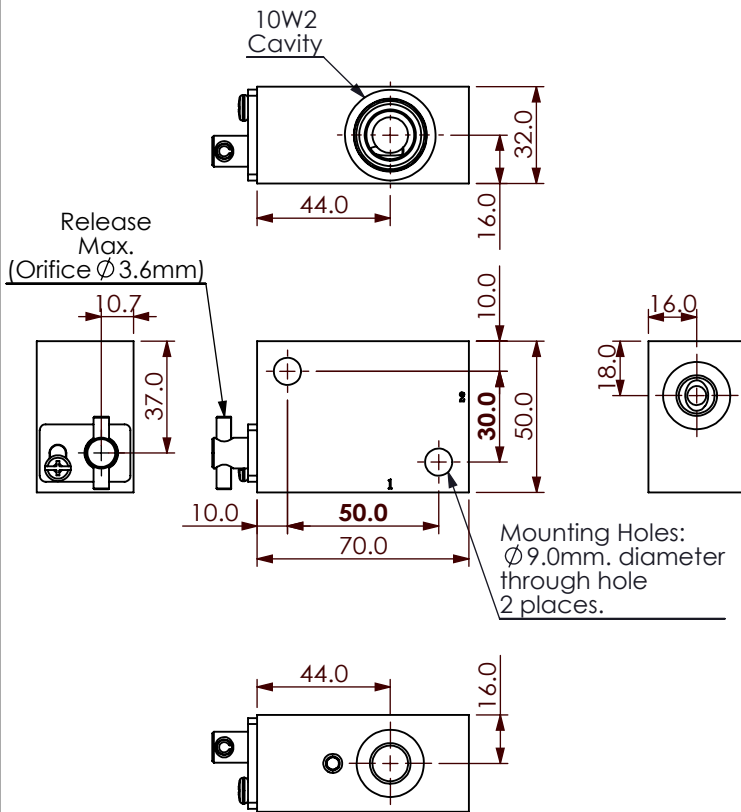
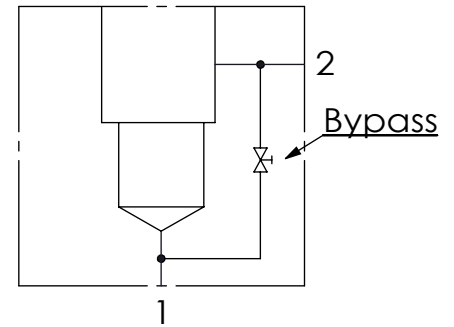


Ordering Code: **ML-10W2-X-Y 31-Z**



UNIT:mm



### TECHNICAL DATA

Aluminum Body Pressure Rating: 210 bar

Steel Body Pressure Rating: 350 bar

Cavity:

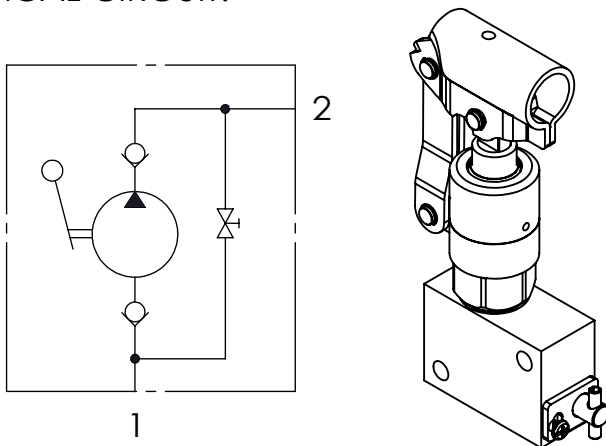
Refer to 10W2

\* Refer to Winner Cartridge Valves Catalog.

Aluminum	0.28 kg(WITHOUT VALVES)
----------	-------------------------

\* If you need the special specification. Please contact us.

TYPICAL CIRCUIT:



### PORT SIZE

X	PORT SIZE		
	PORT 1	PORT 2	
G02	G 1/4"	G 1/4"	
S04	SAE 4	SAE 4	

### Z CARTRIDGE VALVES SELECTION

WITHOUT VALVE

HPOA	HP10W20AN (YDRAULIC HAND PUMP 7.4CC)
------	-----------------------------------------

Y	BODY MATERIAL
---	---------------

AR	HIGH-STRENGTH ALUMINUM
----	------------------------

Please refer to the list price of cartridge program.