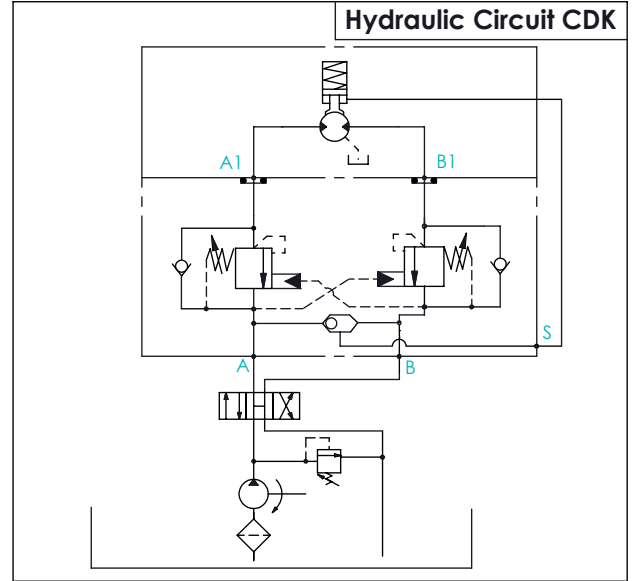


Ordering Code: **MM-60-CDK-X-Y-Z01**

Stack Height : 60.0mm

UNIT:mm



TECHNICAL DATA

Aluminum Body Pressure Rating: 210 bar

Rated flow: 60 l/min

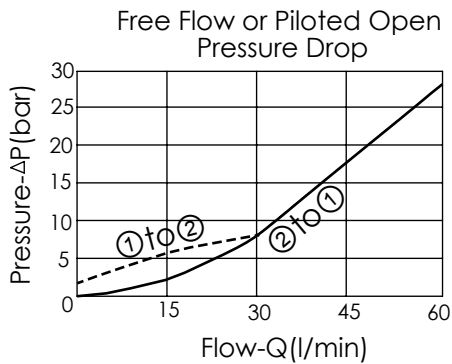
Cartridge Valve:

Refer to CB11A-X-Y-Z

* Reference our Cartridge Valves Catalog.

Weight: 2.1 kg(include valve)

* If you need the special specification.
Please contact us.



X SELECTION FOR COUNTERBALANCE VALVES

11A3-11A3	CAVITY ONLY(WITHOUT VALVE)
CB3H-CB3H	CB11A33HL (3:1 , 280bar)
CB4J-CB4J	CB11A34JL (4.5:1 , 350bar)
CB0J-CB0J	CB11A30JL (10:1 , 350bar)

Please refer to the list price of cartridge program.

Y	PORT SIZE	
	PORTS A.B	PORT S
G04	G 1/2"	G 1/4"

Z BODY MATERIAL

A HIGH-STRENGTH ALUMINUM