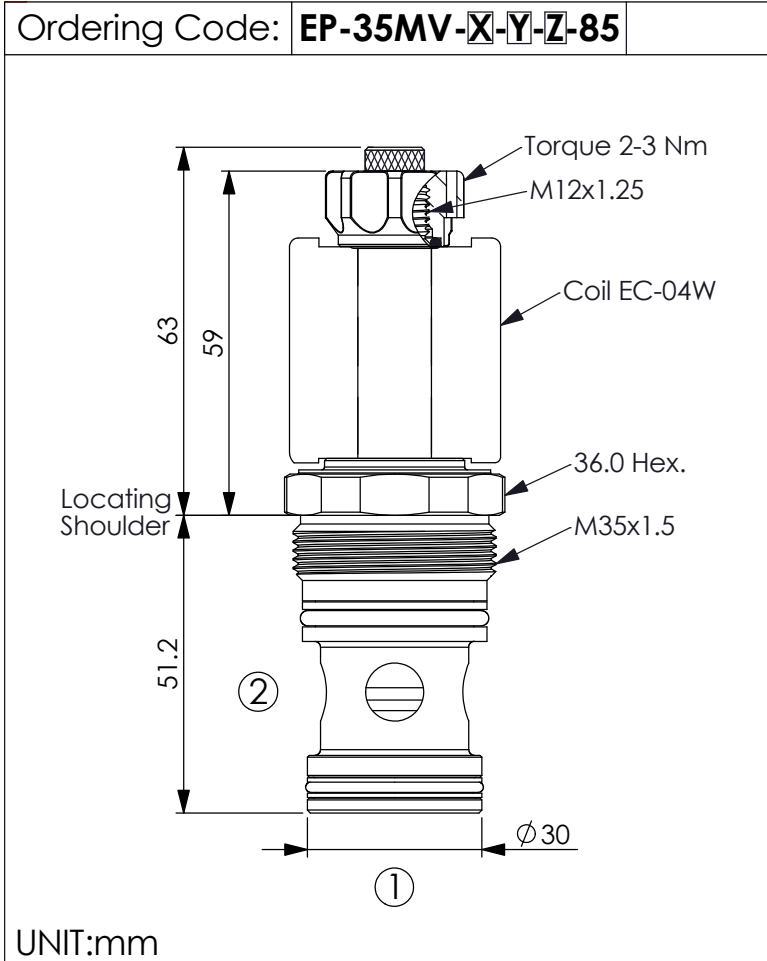
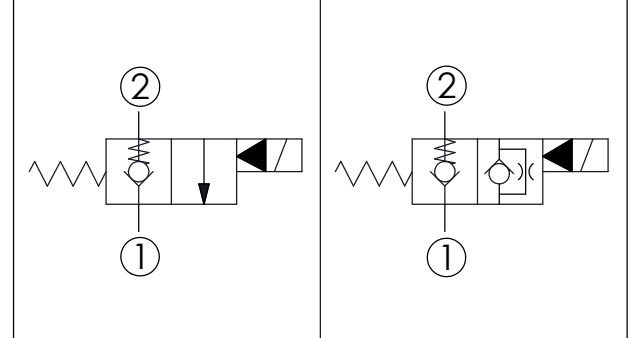


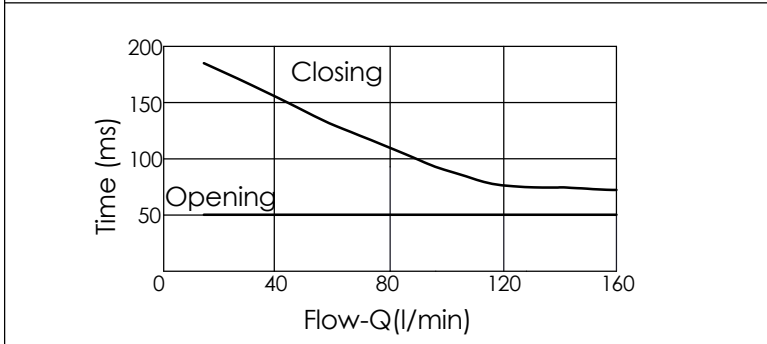
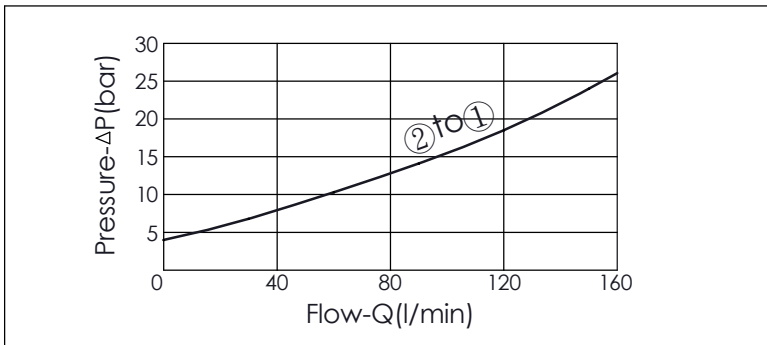
SOLENOID OPERATED VALVE (Pilot Operated) (Poppet 2-Way Normally-Closed Cartridge Style With Extra Spring)



This design allows faster response times with very small flow or even virtually zero flow.



TECHNICAL DATA	
Max.Operating pressure:	350 bar
Rated flow:	150 l/min
Cavity-Tooling:	35MV-2
Installation torque:	80-100 Nm
Weight:	0.32 (Z=N) kg
Fluids-Temperatures:	-40 to 120 °C
Internal Leakage Approximately:	0.15 cc/minute (3 drops/minute) max.at 350 bar
Hydraulic Fluid Cleanliness Level:	Please refer WINNER technical information. (T.101.102.E HYDRAULIC FLUID (B)CLEANLINESS)
Minimum Voltage Required:	90 % of nominal
Coils must be ordered separately	
Mounting Position:	unrestricted



X	STRUCTURE
2A	2 Ports - 20 Watt. Coil Ø 12.7 mm tube

Y	OPERATION
01	Normally-Closed No Reverse Flow Energized

This valve is similar to check valve when de-energized.
Allow free flow from port ① to port ② and block flow from port ② to port ①.
In energized condition, this valve is allowed flow from port ② to port ① but it's difficult to pass that flow from port ① to port ②.
If you need bi-directional flow, please refer Y=05.

Z	OPTIONS
N	Non-adjustable
M	Screw-out Knob Style