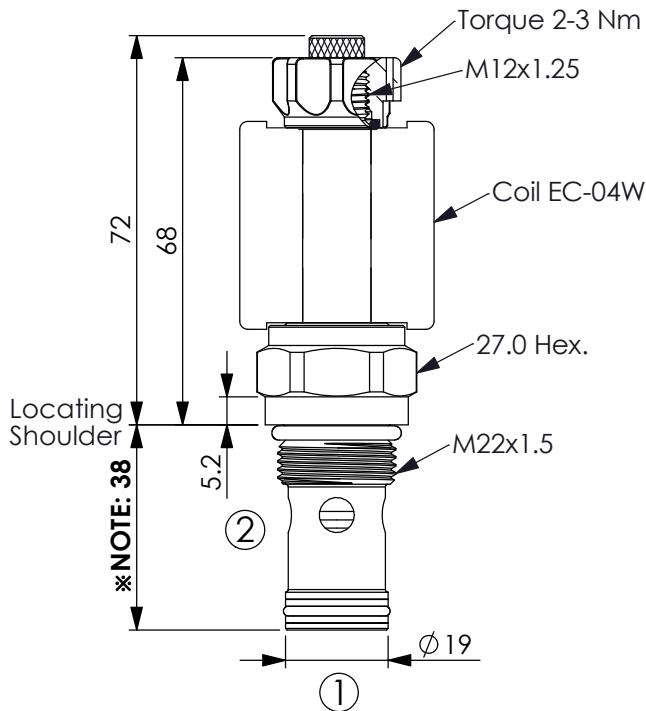
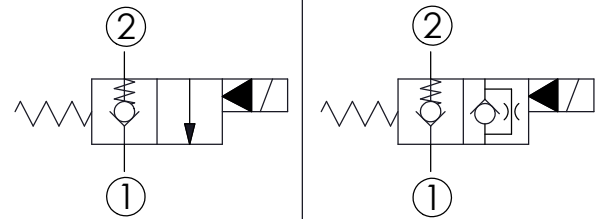


Ordering Code: **EP-22ML-X-Y-Z-85**

This design allows faster response times with very small flow or even virtually zero flow.



UNIT:mm



TECHNICAL DATA

Max.Operating pressure: 350 bar

Rated flow: 70 l/min

Cavity-Tooling: 22ML-2

Installation torque: 44-56 Nm

Weight: 0.183 (Z=N) kg

Fluids-Temperatures: -40 to 120 °C

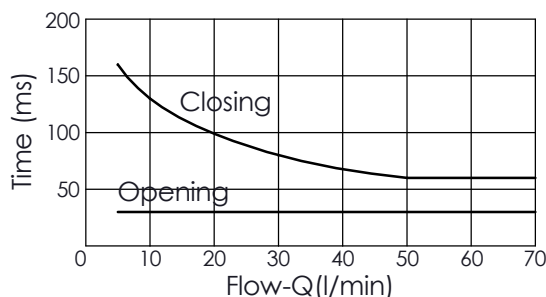
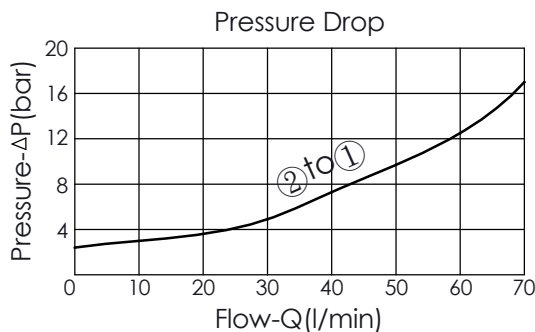
Internal Leakage Approximately:
0.15 cc/minute
(3 drops/minute) max. at 350 bar

Hydraulic Fluid Cleanliness Level:
Please refer WINNER technical information.
(T.101.102.E HYDRAULIC FLUID (B)CLEANLISS)

Minimum Voltage Required:
90 % of nominal

Coils must be ordered separately

Mounting Position: unrestricted



X	STRUCTURE
2A	2 Ports - 20 Watt. Coil Ø 12.7 mm tube

Y	OPERATION
---	-----------

01	Normally-Closed No Reverse Flow Energized
----	--

This valve is similar to check valve when de-energized.
Allow free flow from port ① to port ② and block flow from port ② to port ①.
In energized condition, this valve is allowed flow from port ② to port ① but it's difficult to pass that flow from port ① to port ②.
If you need bi-directional flow, please refer Y=05.

Z	OPTIONS
---	---------

N	Non-adjustable 
---	--

M	Screw-out Knob Style 
---	--