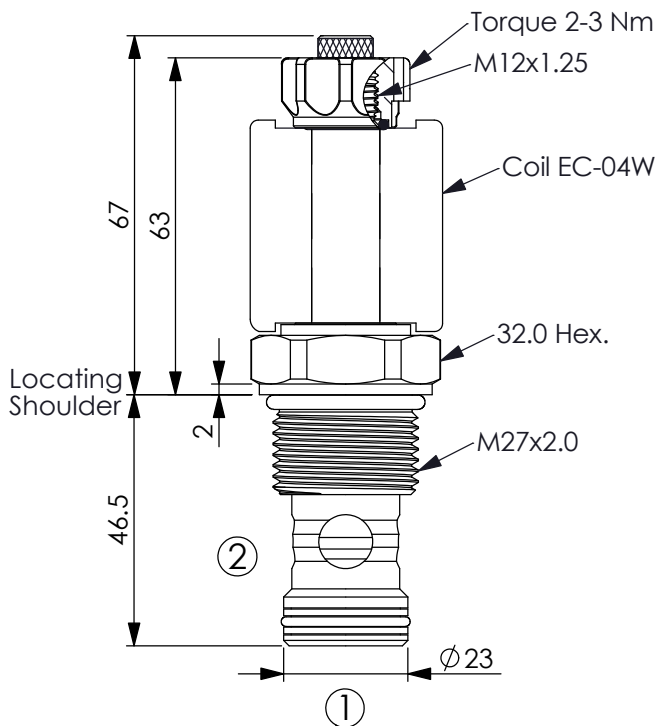
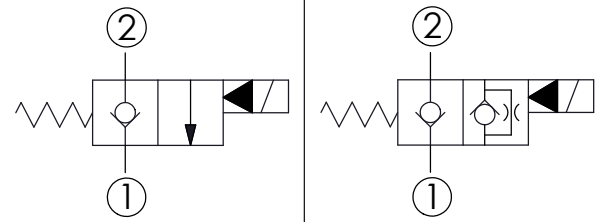


Ordering Code: **EP-27M-X-Y-Z-05**



UNIT:mm



TECHNICAL DATA

Max.Operating pressure: 350 bar

Rated flow: 150 l/min

Cavity-Tooling: 27M-2

Installation torque: 54-66 Nm

Weight: 0.24 (Z=N) kg

Fluids-Temperatures: -40 to 120 °C

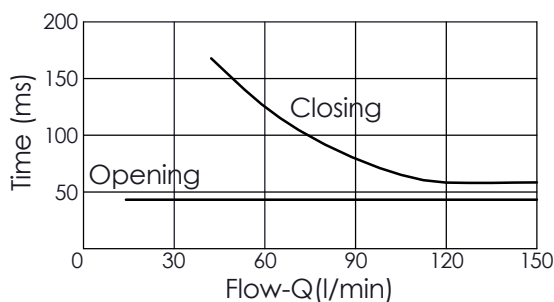
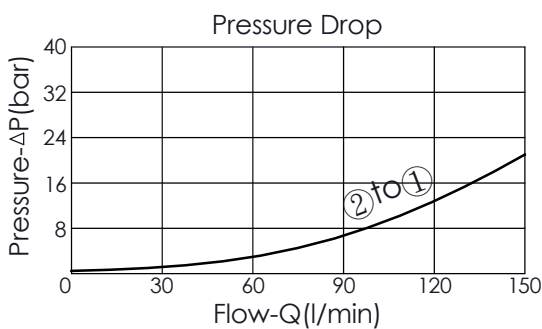
Internal Leakage Approximately:
0.15 cc/minute
(3 drops/minute) max. at 350 bar

Hydraulic Fluid Cleanliness Level:
Please refer WINNER technical information.
(T.101.102.E HYDRAULIC FLUID (B)CLEANLISS)

Minimum Voltage Required:
90 % of nominal

Coils must be ordered separately

Mounting Position: unrestricted



Y OPERATION

01 Normally-Closed
No Reverse Flow Energized

This valve is similar to check valve when de- energized.
Allow free flow from port ① to port ② and block flow from port ② to port ①.
In energized condition, this valve is allowed flow from port ② to port ① but
it's difficult to pass that flow from port ① to port ②.
If you need bi-directional flow, please refer Y=05.

X STRUCTURE

2A 2 Ports · 20 Watt. Coil
∅ 12.7 mm tube

Z OPTIONS

N Non-adjustable



M Screw-out Knob Style

