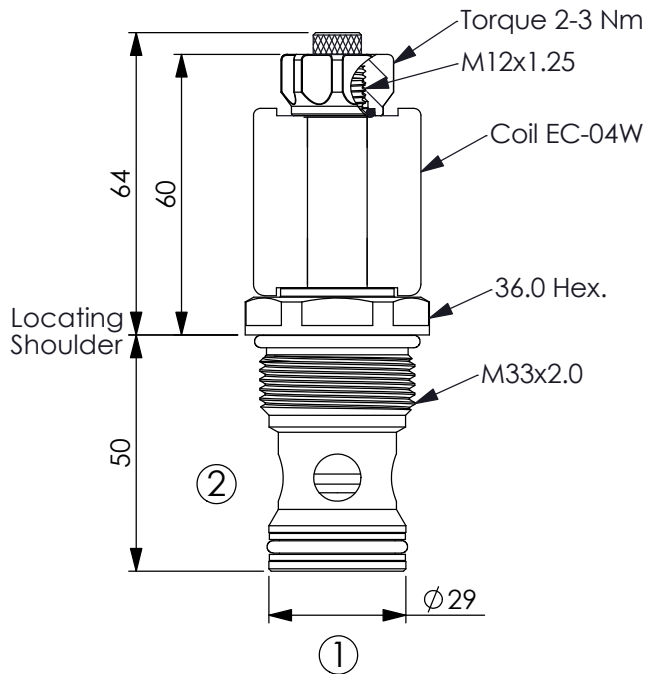
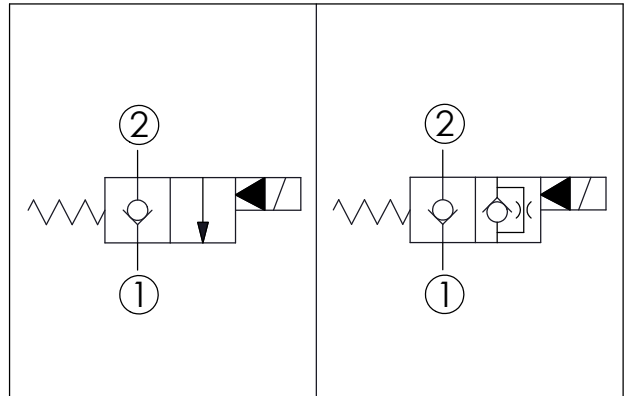


Ordering Code: **EP-33MC-X-Y-Z-05**



UNIT:mm



### TECHNICAL DATA

Max.Operating pressure: 350 bar

Rated flow: 150 l/min

Cavity-Tooling: 33MC-2

Installation torque: 80-100 Nm

Weight: 0.33 (Z=N) kg

Fluids-Temperatures: -40 to 120 °C

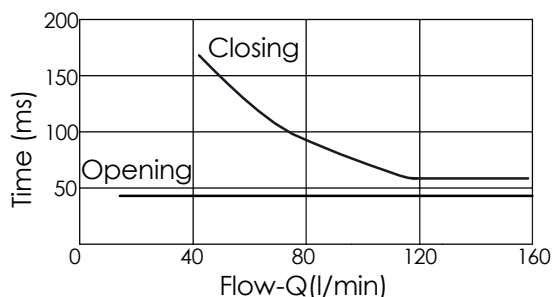
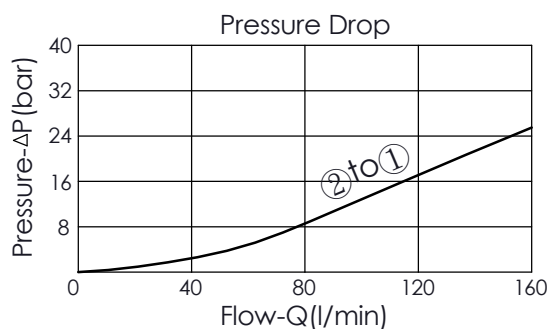
Internal Leakage Approximately:  
0.15 cc/minute  
(3 drops/minute) max. at 350 bar

Hydraulic Fluid Cleanliness Level:  
Please refer WINNER technical information.  
( T.101.102.E HYDRAULIC FLUID (B)CLEANLISS )

Minimum Voltage Required:  
90 % of nominal

Coils must be ordered separately

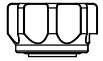
Mounting Position: unrestricted



X	STRUCTURE
2A	2 Ports - 20 Watt. Coil Ø 12.7 mm tube

Y	OPERATION
01	Normally-Closed No Reverse Flow Energized

This valve is similar to check valve when de- energized.  
Allow free flow from port ① to port ② and block flow from port ② to port ①.  
In energized condition, this valve is allowed flow from port ② to port ① but  
it's difficult to pass that flow from port ① to port ②.  
If you need bi-directional flow, please refer Y=05.

Z	OPTIONS
N	Non-adjustable 
M	Screw-out Knob Style 