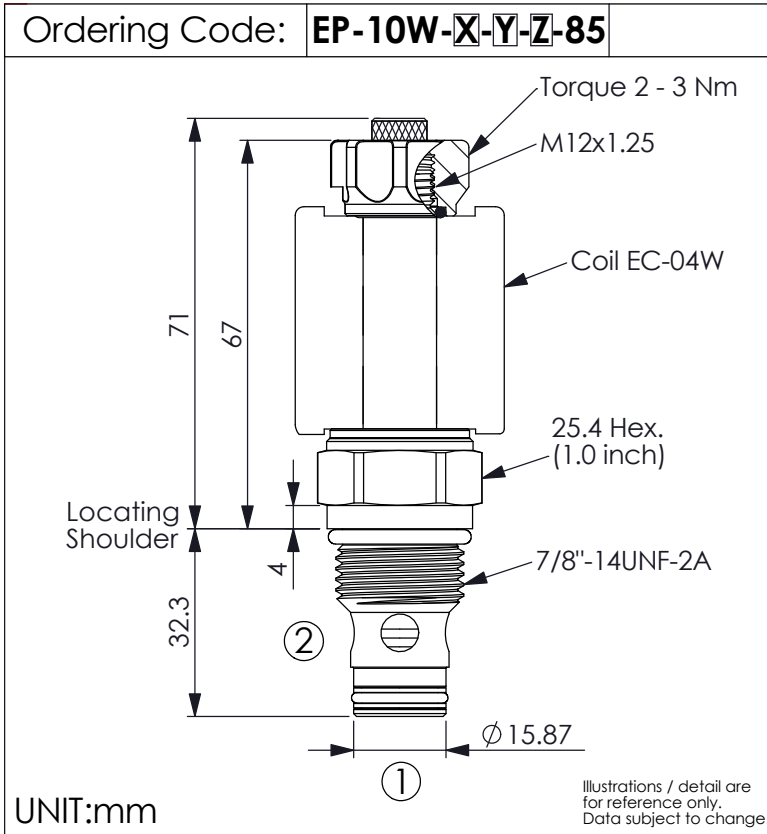
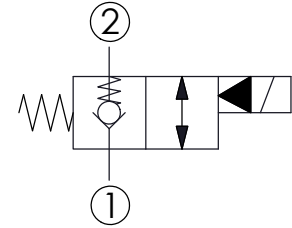


## SOLENOID OPERATED VALVE (Pilot Operated) (Poppet 2-Way Normally-Closed Cartridge Style With Extra Spring)

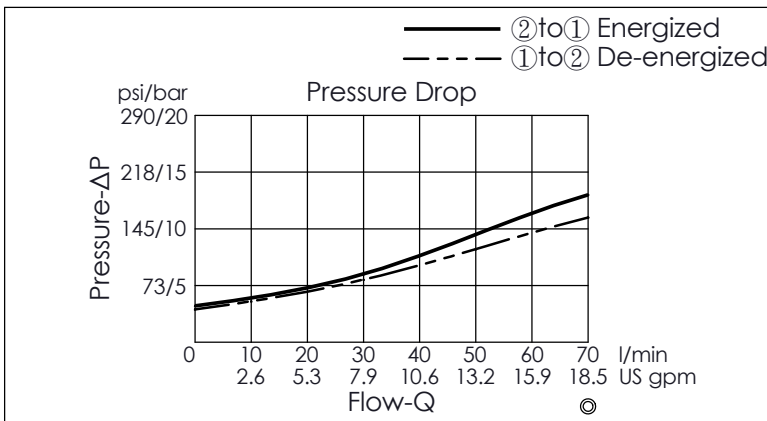


This design allows faster response times with very small flow or even virtually zero flow.



### TECHNICAL DATA

Max. Operating pressure:	350 bar
Rated flow:	70 l/min
Cavity-Tooling:	10W-2
Installation torque:	44 - 56 Nm
Weight:	0.158 (Z=N) kg



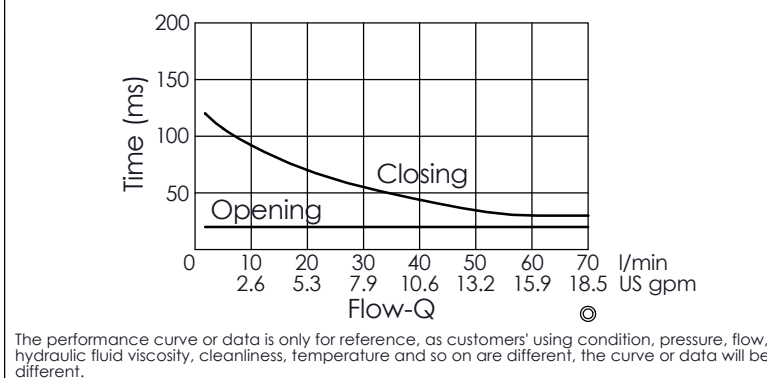
Internal Leakage Approximately:  
0.15 cc/minute  
(3 drops/minute) max. at 350 bar

Hydraulic Fluid Viscosity · Cleanliness · Temperature Level:  
Please refer WINNER technical information.  
( T.101.101.E HYDRAULIC FLUID (A) VISCOSITY )  
( T.101.102.E HYDRAULIC FLUID (B) CLEANLINESS )  
( T.101.103.E HYDRAULIC FLUID (C) TEMPERATURE )

Minimum Voltage Required:  
90 % of nominal

Coils must be ordered separately

Mounting Position: unrestricted



X	STRUCTURE
2A	2 Ports · 20 Watt. Coil Ø 12.7 mm tube

Y	OPERATION
05	Normally-Closed Reverse Flow Energized

Z	OPTIONS
N	Non-adjustable
M	Screw-out Knob Style