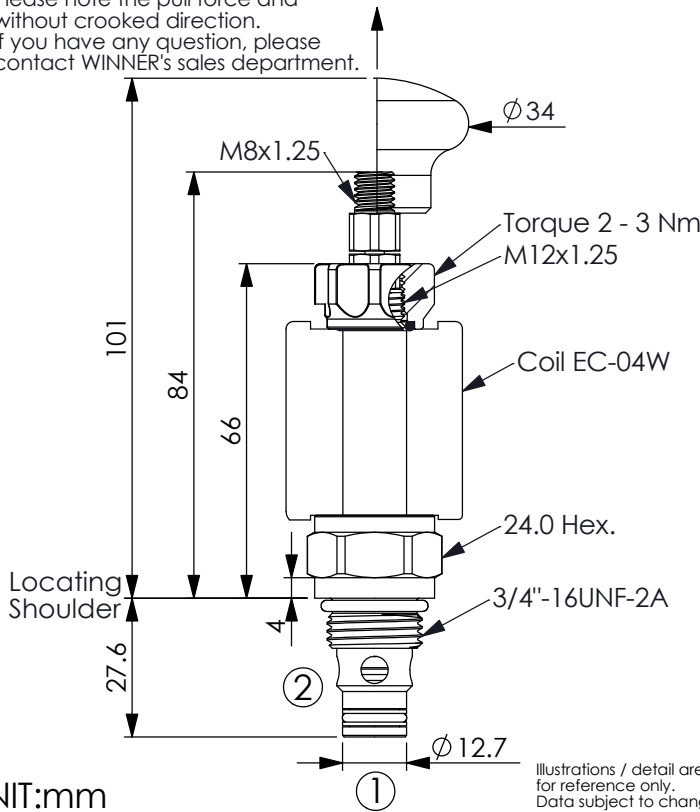


SOLENOID OPERATED VALVE (Pilot Operated) (Poppet 2-Way Double Lock Normally-Closed Cartridge Style)

Ordering Code: **EP-08W-X-Y-Z-05**

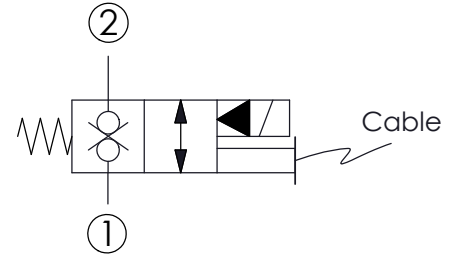
Please note the pull force and without crooked direction.
If you have any question, please contact WINNER's sales department.



UNIT:mm

Illustrations / detail are for reference only.
Data subject to change.

IMPORTANT:Maximum Operating Pressure must never be exceeded, since this valve tends to open at pressures over 300 bar.



TECHNICAL DATA

Max.Operating pressure:	250	bar
Rated flow:	20	l/min
Cavity-Tooling:	08W-2	
Installation torque:	39 - 51	Nm
Weight:	0.133 (Z=L)	kg

Internal Leakage Approximately:
0.15 cc/minute
(3 drops/minute) max. at 250 bar

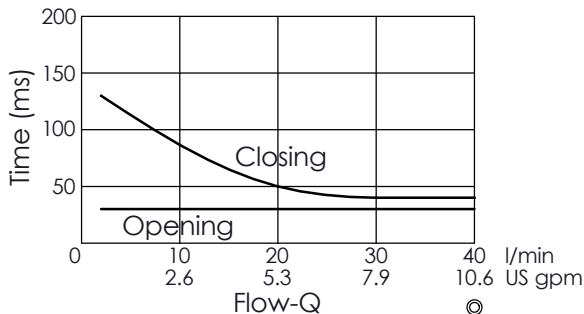
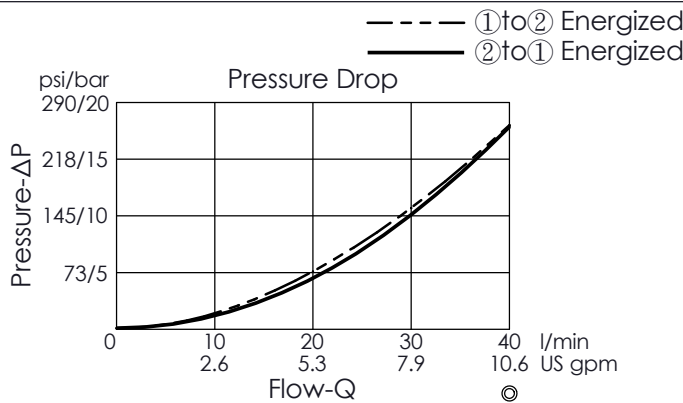
Hydraulic Fluid Viscosity · Cleanliness · Temperature Level:
Please refer WINNER technical information.
(T.101.101.E HYDRAULIC FLUID (A) VISCOSITY)
(T.101.102.E HYDRAULIC FLUID (B) CLEANLINESS)
(T.101.103.E HYDRAULIC FLUID (C) TEMPERATURE)

Filter: \varnothing 0.3mm (50 mesh)
(If you need more finer mesh filter, please feel free to contact us.)

Minimum Voltage Required:
90 % of nominal

Coils must be ordered separately

Mounting Position: unrestricted



The performance curve or data is only for reference, as customers' using condition, pressure, flow, hydraulic fluid viscosity, cleanliness, temperature and so on are different, the curve or data will be different.

Y	OPERATION	
31	Normally-Closed Double Lock	

X	STRUCTURE	
2A	2 Ports · 20 Watt. Coil \varnothing 12.7 mm tube	

Z	OPTIONS	
L	Pull Style (Cable Operated) (M8x1.25)	
H	Pull Style (Hand Operated) (Suitable for M8x1.25)	

· If there are requirements other than thread of Z=L or Z=H, please contact the Winner sales department.