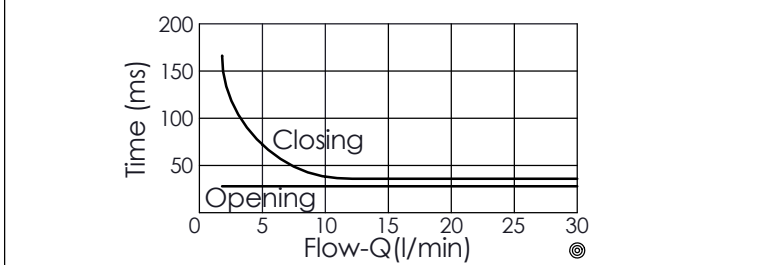
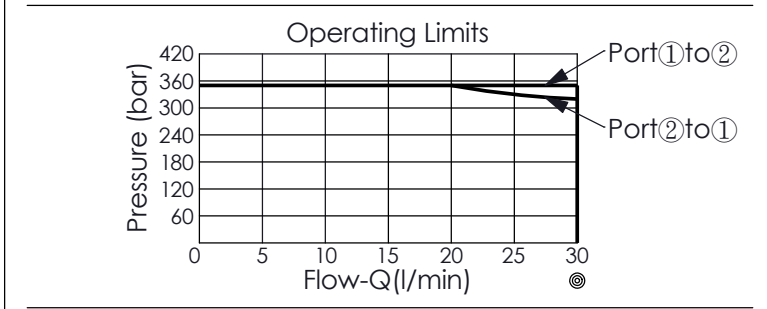
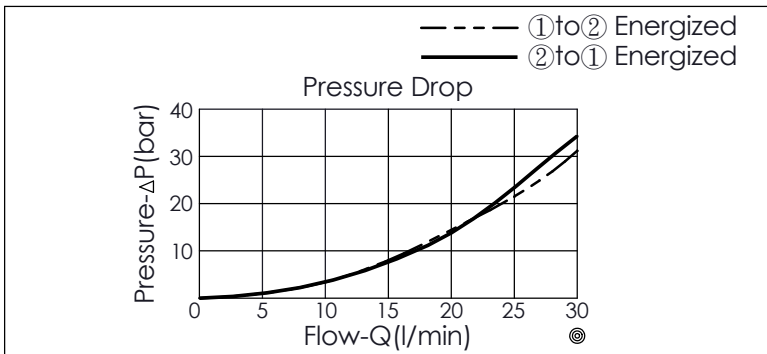


TECHNICAL DATA	
Max. Operating pressure:	350 bar (Refer To Performance Chart)
Rated flow:	20 l/min (Refer To Performance Chart)
Cavity-Tooling:	19E-2
Installation torque:	39 - 51 Nm
Weight:	0.183 (Z=N) kg



The performance curve or data is only for reference, as customers' using condition, pressure, flow, hydraulic fluid viscosity, cleanliness, temperature and so on are different, the curve or data will be different.

Internal Leakage Approximately:
0.15 cc/minute
(3 drops/minute) max. at 350 bar

Hydraulic Fluid Viscosity · Cleanliness · Temperature Level:
Please refer WINNER technical information.
(T.101.101.E HYDRAULIC FLUID (A) VISCOSITY)
(T.101.102.E HYDRAULIC FLUID (B) CLEANLINESS)
(T.101.103.E HYDRAULIC FLUID (C) TEMPERATURE)

Minimum Voltage Required:
90 % of nominal

Coils must be ordered separately

Mounting Position: unrestricted

X	STRUCTURE	
2C	2 Ports · 26 Watt. Coil ∅ 16 mm tube	

Z	OPTIONS	
N	Non-adjustable	
P	Push Style Manual Override	

T Push and Twist Style
Manual Override
(For emergency or test use only.
Please keep at the normal
operational position after
turning counterclockwise.)
(A larger force is required for
downward push during
high-pressure operations,
please contact Winner's sales
department.)

Y	OPERATION	
51	Direct-Acting Normally-Closed Double-Lock, Fast acting	