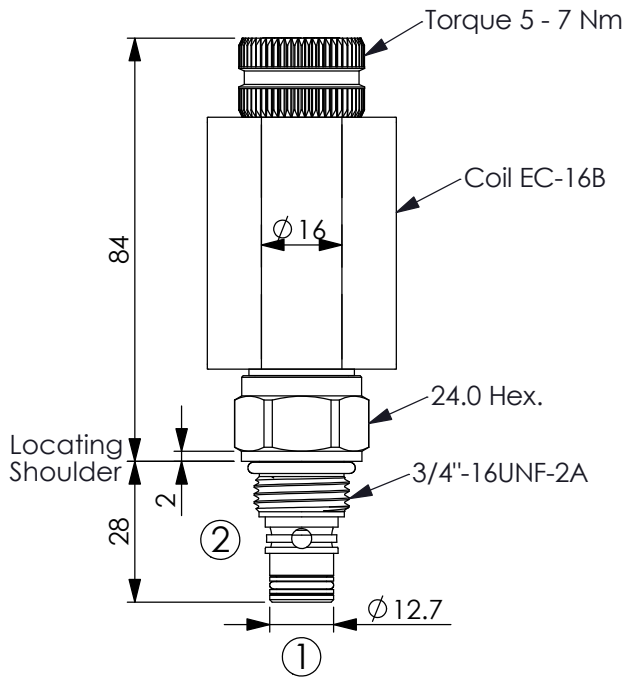
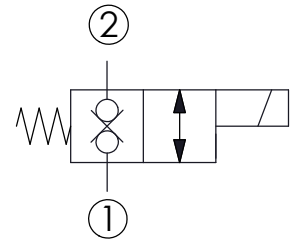


Ordering Code: **EP-08W-X-Y-Z-04S**



UNIT:mm

Illustrations / detail are for reference only. Data subject to change.



TECHNICAL DATA

Max.Operating pressure: 350 bar
(Refer To Performance Chart)

Rated flow: 20 l/min
(Refer To Performance Chart)

Cavity-Tooling: 08W-2

Max.Installation torque: 25 - 35 Nm

Weight: 0.18 kg

Internal Leakage Approximately:
0.15cc/minute
(3 drops/minute) max. at 210 bar

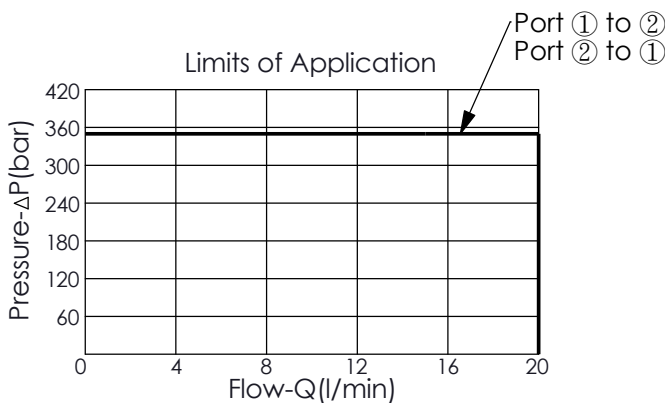
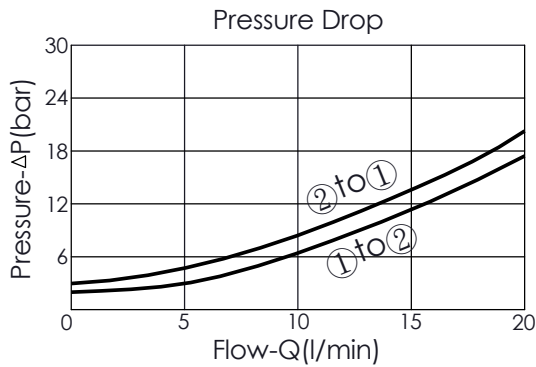
Hydraulic Fluid Viscosity · Cleanliness · Temperature Level:
Please refer WINNER technical information.
(T.101.101.E HYDRAULIC FLUID (A) VISCOSITY)
(T.101.102.E HYDRAULIC FLUID (B) CLEANLINESS)
(T.101.103.E HYDRAULIC FLUID (C) TEMPERATURE)

Minimum Voltage Required:
90 % of nominal

Coils must be ordered separately

Mounting Position: unrestricted

Performance Chart



Y	OPERATION
51	Direct-Acting Normally-Closed Double-Lock

X	STRUCTURE
2C	2 Ports · 26 Watt. Coil Ø 16 mm tube

Z	OPTIONS
N	Non-adjustable With stainless steel all metal components