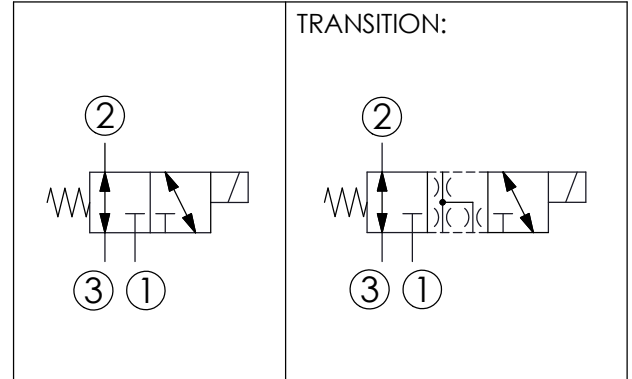


<b>Y</b>	<b>OPERATION</b>
<b>15</b>	Spool 3-Way,2-Position



### TECHNICAL DATA

Max.Operating pressure:	350 bar
(Refer To Performance Chart)	
Rated flow:	15 l/min
(Refer To Performance Chart)	
Cavity-Tooling:	08W-3
Installation torque:	39 - 51 Nm
Weight:	0.11 (Z=N) 0.12 (Z=M) kg

Response time depending on pressure and flow	ON	30 - 60 ms
	OFF	20 - 40 ms
Hydraulic Fluid Viscosity · Cleanliness · Temperature Level: Please refer WINNER technical information. ( T.101.101.E HYDRAULIC FLUID (A) VISCOSITY ) ( T.101.102.E HYDRAULIC FLUID (B) CLEANLINESS ) ( T.101.103.E HYDRAULIC FLUID (C) TEMPERATURE )		
Minimum Voltage Required: 90 % of nominal		
Coils must be ordered separately		
Mounting Position: unrestricted		

<b>X</b>	<b>STRUCTURE</b>
<b>3A</b>	3 Ports · 20 Watt. Coil ∅ 12.7 mm tube

<b>Z</b>	<b>OPTIONS</b>
<b>N</b>	Non-adjustable
<b>M</b>	Screw-out Knob Style