

Directional Valve Manual Rotary Components - Installation Instructions

Assembly Drawing: * Please following the instruction to tighten screw.

***Note 3:** Screw, Rotator with two screws, 2.5 Internal Hex. Installation Torque: 2 - 3 Nm

***Note 1:** Please loosen ***Note 3** and ***Note 4**: Loosen screw of "rotator" and "adapter plate". Turn counterclockwise "rotator" and "adapter plate" to suitable position. Please avoid to turn clockwise that may cause wrong hole position. (Please refer ***Note 1-1**.) Please tighten ***Note 2** Screw firstly, then tighten 5 screws at ***Note 3** and ***Note 4**.

***Note: 1-1:** If you carelessly turn clockwise to make hole position wrong, please loosen component (12), disassemble components (11)(9)(8)(7). And please following "Start Hole Position Illustrations" to re-position. Make sure the bi-directional flow at valve's port ① and port ②, then assemble and tighten.

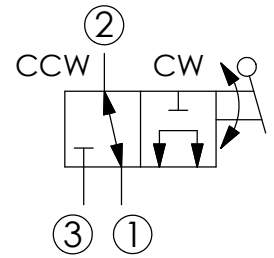
***Note 2:** Screw, 2.5 Internal Hex. Installation Torque: 1.5 - 2 Nm
You are able to loosen this screw after tighten 5 screws to adjust inlay.

***Please tighten lever yourself.** Turn clockwise to operate after tighten screws.

***Note 4:** Screw, Adapter plate with three screws, 2.5 Internal Hex. Installation Torque: 2 - 3 Nm

Example:

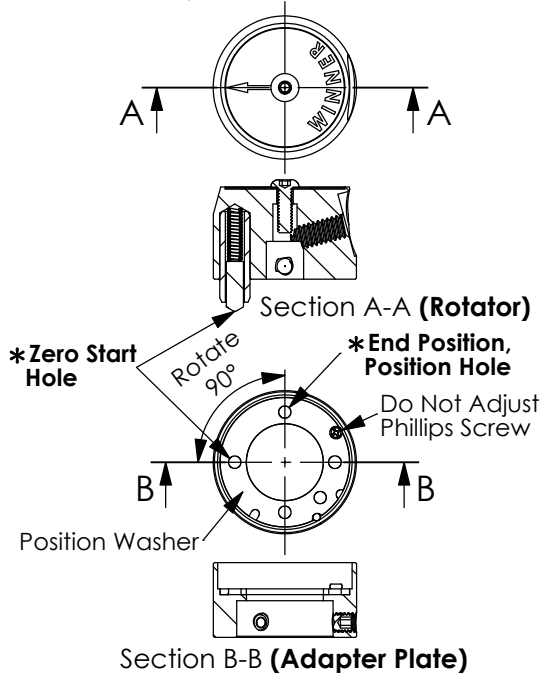
DR-10W-3A-11-R-1



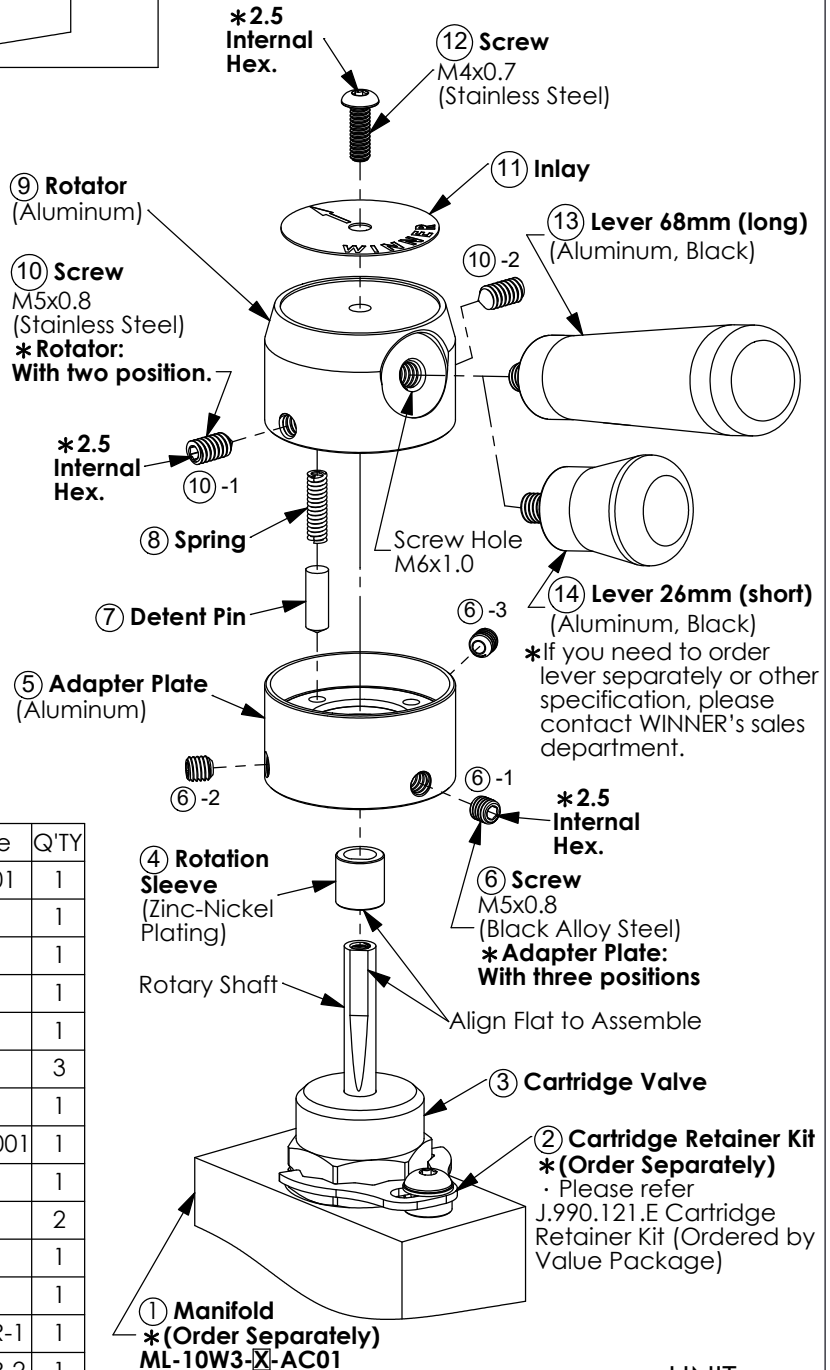
• Turn CCW, port ② to port ①.
• Turn CW, port ③ to port ①.

Start Hole Position Illustrations:

2-Position Knob, 0° - 90°



Exploded Drawing:



Item	Product Name	Ordering Code	Q'TY
①	Manifold (Order Separately)	ML-10W3- X -AC01	1
②	Cartridge Retainer Kit (Order Separately)	7ZE2540C002	1
③	Cartridge Valve	DR-10W-3A-11	1
④	Rotation Sleeve	6GX09A10001	1
⑤	Adapter Plate (Sub-Assembly)	7GX37A19001	1
⑥	Screw M5x0.8 (Black Alloy Steel)	5DBM05A001	3
⑦	Detent Pin	6GX04A13001	1
⑧	Spring	4DA0307A0072001	1
⑨	Rotator (Sub-Assembly)	7GX37A24001	1
⑩	Screw M5x0.8 (Stainless Steel)	4DCM05E006	2
⑪	Inlay	3AA008	1
⑫	Screw M4x0.7 (Stainless Steel)	4DCM04N001	1
⑬	Lever 68 mm (long) (With Lever)	DR-10W-3A-11-R-1	1
⑭	Lever 26 mm (short) (With Lever)	DR-10W-3A-11-R-2	1

UNIT:mm

Directional Valve Manual Rotary Components - Installation Instructions

Start Hole Position Illustrations:

3-Position Knob, 45° - 0° - 45°

